



NARRABRI MINE – MONTHLY MONITORING SUMMARY

Site Information

EPL No: 12789

EPA Website Link: <http://www.epa.nsw.gov.au/prpoeoapp/ViewPOEOLicence.aspx?DOCID=106922&SYSUID=1&LICID=12789>

Licensee: Narrabri Coal Operations Pty Ltd

Licensee Address: Narrabri Mine, 10 Kurrajong Creek Road, BAAN BAA NSW 2390

EPL Monitoring Points: See Figure 1 below

Sampling Period: January 2024

Obtained Date: 08/02/2024

Publication Date: 15/02/2024



Table 1 – No Pollutant Limits Apply

EPL ID	Pollutant	Units of Measure	Sample Method	Monitoring Frequency	No. of Samples for the Month	Dates Sampled	Date Obtained	Min Value	Mean Value	Median Value	Max or Only Value
ND3	Deposited Matter	g/m ² /month	Lab Analysis	Once a month (min. 4 weeks)	1	12/01/2024	08/02/2024	NA	NA	NA	0.9
11 (SD4)	Conductivity	µs/cm	In situ	Upon discharge (within 12 hours)	<i>No discharge occurred during sampling period (SD4)</i>						
	TOC	mg/L	Lab Analysis								
13 (SD2)	Conductivity	µs/cm	In situ	Upon discharge (within 12 hours)	<i>No discharge occurred during sampling period (SD2)</i>						
	TOC	mg/L	Lab Analysis								
14 (KC1US)	Conductivity	µs/cm	In situ	In the event of flow during the quarter & after each wet weather discharge from points 11, 13, 18,27	<i>No flow events and/or mine discharge occurred during sampling period (KC1US)</i>						
	TOC	mg/L	Lab Analysis								
	Oil & Grease	mg/L	Lab Analysis								
	pH	pH	In situ								
15 (KC1DS)	TSS	mg/L	Lab Analysis	In the event of flow during the quarter & after each wet weather discharge from points 11, 13, 18,27	<i>No flow events and/or mine discharge occurred during sampling period (KC1DS)</i>						
	Conductivity	µs/cm	In situ								
	TOC	mg/L	Lab Analysis								
	Oil & Grease	mg/L	Lab Analysis								
	pH	pH	In situ								

16 (KC2US)	Conductivity	µs/cm	In situ	In the event of flow during the quarter & after each wet weather discharge from points 11, 13, 18,27	<i>No flow events and/or mine discharge occurred during sampling period (KC2US)</i>
	TOC	mg/L	Lab Analysis		
	Oil & Grease	mg/L	Lab Analysis		
	pH	pH	In situ		
	TSS	mg/L	Lab Analysis		
17 (KC2DS)	Conductivity	µs/cm	In situ	In the event of flow during the quarter & after each wet weather discharge from points 11, 13, 18,27	<i>No flow events and/or mine discharge occurred during sampling period (KC2DS)</i>
	TOC	mg/L	Lab Analysis		
	Oil & Grease	mg/L	Lab Analysis		
	pH	pH	In situ		
	TSS	mg/L	Lab Analysis		
18 (SD7)	Conductivity	µs/cm	In Situ	Upon discharge (within 12 hours)	<i>No discharge occurred during sampling period (SD7)</i>
	TOC	mg/L	Lab Analysis		
19 (KCUS)	Conductivity	µs/cm	In situ	In the event of flow during the quarter & after each wet weather discharge from points 11, 13, 18,27	<i>No flow events and/or mine discharge occurred during sampling period (KCUS)</i>
	TOC	mg/L	Lab Analysis		
	Oil & Grease	mg/L	Lab Analysis		
	pH	pH	In situ		
	TSS	mg/L	Lab Analysis		
20 (KCDS)	Conductivity	µs/cm	In situ	In the event of flow during the quarter & after each wet weather discharge	<i>No flow events and/or mine discharge occurred during sampling period (KCDS)</i>
	TOC	mg/L	Lab Analysis		
	Oil & Grease	mg/L	Lab Analysis		
	pH	pH	In situ		

	TSS	mg/L	Lab Analysis	from points 11, 13, 18,27		
21 (PCa)	Conductivity	µs/cm	In situ	In the event of flow during the quarter & after each wet weather discharge from points 11, 13, 18,27	<i>No flow events and/or mine discharge occurred during sampling period (PCa)</i>	
	TOC	mg/L	Lab Analysis			
	Oil & Grease	mg/L	Lab Analysis			
	pH	pH	In situ			
	TSS	mg/L	Lab Analysis			
22 (PC1)	Conductivity	µs/cm	In situ	In the event of flow during the quarter & after each wet weather discharge from points 11, 13, 18,27	<i>No flow events and/or mine discharge occurred during sampling period (PC1)</i>	
	TOC	mg/L	Lab Analysis			
	Oil & Grease	mg/L	Lab Analysis			
	pH	pH	In situ			
	TSS	mg/L	Lab Analysis			
24 (NR1)	pH	pH	In situ	Upon Discharge (within 4 hrs)	<i>Namoi discharge point – Not constructed or currently utilised (NR1)</i>	
	TDS	mg/L	Lab Analysis			
25 (NRUS)	pH	pH	In situ	Upon Discharge (within 4 hrs)	<i>Namoi discharge point – Not constructed or currently utilised (NRUS)</i>	
	TDS	mg/L	Lab Analysis			
26 (NRDS)	pH	pH	In situ	Upon Discharge (within 4 hrs)	<i>Namoi discharge point – Not constructed or currently utilised (NRDS)</i>	
	TDS	mg/L	Lab Analysis			
28 (P28)	Conductivity	µs/cm	In situ	Quarterly	0	<i>Not scheduled for sampling during sampling period</i>
	pH	pH	In situ		0	
	SWL	mbtoc	In situ		0	
	Bicarbonate	mg/L	Lab Analysis		0	

	Calcium	mg/L	Lab Analysis		0	
	Carbonate	mg/L	Lab Analysis		0	
	Chloride	mg/L	Lab Analysis		0	
	Magnesium	mg/L	Lab Analysis		0	
	Potassium	mg/L	Lab Analysis		0	
	Sodium	mg/L	Lab Analysis		0	
	Sulphate	mg/L	Lab Analysis		0	
29 (P29)	Conductivity	µs/cm	Lab Analysis	Quarterly	0	<i>Not scheduled for sampling during sampling period</i>
	pH	pH	Lab Analysis		0	
	SWL	mbtoc	Lab Analysis		0	
	Bicarbonate	mg/L	Lab Analysis		0	
	Calcium	mg/L	Lab Analysis		0	
	Carbonate	mg/L	Lab Analysis		0	
	Chloride	mg/L	Lab Analysis		0	
	Magnesium	mg/L	Lab Analysis		0	
	Potassium	mg/L	Lab Analysis		0	
	Sodium	mg/L	Lab Analysis		0	

	Sulphate	mg/L	Lab Analysis		0	
30 (P30)	Conductivity	µs/cm	Lab Analysis	Quarterly	0	<i>Not scheduled for sampling during sampling period</i>
	pH	pH	Lab Analysis		0	
	SWL	mbtoc	Lab Analysis		0	
	Bicarbonate	mg/L	Lab Analysis		0	
	Calcium	mg/L	Lab Analysis		0	
	Carbonate	mg/L	Lab Analysis		0	
	Chloride	mg/L	Lab Analysis		0	
	Magnesium	mg/L	Lab Analysis		0	
	Potassium	mg/L	Lab Analysis		0	
	Sodium	mg/L	Lab Analysis		0	
	Sulphate	mg/L	Lab Analysis		0	
31 (P31)	Conductivity	µs/cm	Lab Analysis	Quarterly	0	<i>Not scheduled for sampling during sampling period</i>
	pH	pH	Lab Analysis		0	
	SWL	mbtoc	Lab Analysis		0	
	Bicarbonate	mg/L	Lab Analysis		0	
	Calcium	mg/L	Lab Analysis		0	

	Carbonate	mg/L	Lab Analysis		0	
	Chloride	mg/L	Lab Analysis		0	
	Magnesium	mg/L	Lab Analysis		0	
	Potassium	mg/L	Lab Analysis		0	
	Sodium	mg/L	Lab Analysis		0	
	Sulphate	mg/L	Lab Analysis		0	
32 (P32)	Conductivity	µs/cm	Lab Analysis	Quarterly	0	<i>Not scheduled for sampling during sampling period</i>
	pH	pH	Lab Analysis		0	
	SWL	mbtoc	Lab Analysis		0	
	Bicarbonate	mg/L	Lab Analysis		0	
	Calcium	mg/L	Lab Analysis		0	
	Carbonate	mg/L	Lab Analysis		0	
	Chloride	mg/L	Lab Analysis		0	
	Magnesium	mg/L	Lab Analysis		0	
	Potassium	mg/L	Lab Analysis		0	
	Sodium	mg/L	Lab Analysis		0	
	Sulphate	mg/L	Lab Analysis		0	

33 (P33)	Conductivity	µs/cm	Lab Analysis	Quarterly	0	<i>Not scheduled for sampling during sampling period</i>
	pH	pH	Lab Analysis		0	
	SWL	mbtoc	Lab Analysis		0	
	Bicarbonate	mg/L	Lab Analysis		0	
	Calcium	mg/L	Lab Analysis		0	
	Carbonate	mg/L	Lab Analysis		0	
	Chloride	mg/L	Lab Analysis		0	
	Magnesium	mg/L	Lab Analysis		0	
	Potassium	mg/L	Lab Analysis		0	
	Sodium	mg/L	Lab Analysis		0	
	Sulphate	mg/L	Lab Analysis		0	
34 (P34)	Conductivity	µs/cm	In situ	Quarterly	0	<i>Not scheduled for sampling during sampling period</i>
	pH	pH	In situ		0	
	SWL	mbtoc	In situ		0	
	Bicarbonate	mg/L	Lab Analysis		0	
	Calcium	mg/L	Lab Analysis		0	
	Carbonate	mg/L	Lab Analysis		0	
	Chloride	mg/L	Lab Analysis		0	
	Magnesium	mg/L	Lab Analysis		0	

	Potassium	mg/L	Lab Analysis		0	
	Sodium	mg/L	Lab Analysis		0	
	Sulphate	mg/L	Lab Analysis		0	
35 (P58)	Conductivity	µs/cm	Lab Analysis	Quarterly	0	<i>Not scheduled for sampling during sampling period</i>
	pH	pH	Lab Analysis		0	
	SWL	mbtoc	Lab Analysis		0	
	Bicarbonate	mg/L	Lab Analysis		0	
	Calcium	mg/L	Lab Analysis		0	
	Carbonate	mg/L	Lab Analysis		0	
	Chloride	mg/L	Lab Analysis		0	
	Magnesium	mg/L	Lab Analysis		0	
	Potassium	mg/L	Lab Analysis		0	
	Sodium	mg/L	Lab Analysis		0	
	Sulfate	mg/L	Lab Analysis		0	
36 (P83)	Conductivity	µs/cm	In situ	Quarterly	0	<i>Not scheduled for sampling during sampling period</i>
	pH	pH	In situ		0	
	SWL	mbtoc	In situ		0	
	Bicarbonate	mg/L	Lab Analysis		0	
	Calcium	mg/L	Lab Analysis		0	

	Carbonate	mg/L	Lab Analysis		0	
	Chloride	mg/L	Lab Analysis		0	
	Magnesium	mg/L	Lab Analysis		0	
	Potassium	mg/L	Lab Analysis		0	
	Sodium	mg/L	Lab Analysis		0	
	Sulphate	mg/L	Lab Analysis		0	
37 (P84)	Conductivity	µs/cm	In situ	Quarterly	0	<i>Not scheduled for sampling during sampling period</i>
	pH	pH	In situ		0	
	SWL	mbtoc	In situ		0	
	Bicarbonate	mg/L	Lab Analysis		0	
	Calcium	mg/L	Lab Analysis		0	
	Carbonate	mg/L	Lab Analysis		0	
	Chloride	mg/L	Lab Analysis		0	
	Magnesium	mg/L	Lab Analysis		0	
	Potassium	mg/L	Lab Analysis		0	
	Sodium	mg/L	Lab Analysis		0	
	Sulphate	mg/L	Lab Analysis		0	
38 (P85)	Conductivity	µs/cm	In situ		0	
	pH	pH	In situ		0	
	SWL	mbtoc	In situ		0	

	Bicarbonate	mg/L	Lab Analysis	Quarterly	0	<i>Not scheduled for sampling during sampling period</i>
	Calcium	mg/L	Lab Analysis		0	
	Carbonate	mg/L	Lab Analysis		0	
	Chloride	mg/L	Lab Analysis		0	
	Magnesium	mg/L	Lab Analysis		0	
	Potassium	mg/L	Lab Analysis		0	
	Sodium	mg/L	Lab Analysis		0	
	Sulfate	mg/L	Lab Analysis		0	
39 (P88)	Conductivity	µs/cm	In situ	Quarterly	0	<i>Not scheduled for sampling during sampling period</i>
	pH	pH	In situ		0	
	SWL	mbtoc	In situ		0	
	Bicarbonate	mg/L	Lab Analysis		0	
	Calcium	mg/L	Lab Analysis		0	
	Carbonate	mg/L	Lab Analysis		0	
	Chloride	mg/L	Lab Analysis		0	
	Magnesium	mg/L	Lab Analysis		0	
	Potassium	mg/L	Lab Analysis		0	
	Sodium	mg/L	Lab Analysis		0	
	Sulfate	mg/L	Lab Analysis		0	

40 (P89)	Conductivity	µs/cm	In situ	Quarterly	0	<i>Not scheduled for sampling during sampling period</i>
	pH	pH	In situ		0	
	SWL	mbtoc	In situ		0	
	Bicarbonate	mg/L	Lab Analysis		0	
	Calcium	mg/L	Lab Analysis		0	
	Carbonate	mg/L	Lab Analysis		0	
	Chloride	mg/L	Lab Analysis		0	
	Magnesium	mg/L	Lab Analysis		0	
	Potassium	mg/L	Lab Analysis		0	
	Sodium	mg/L	Lab Analysis		0	
	Sulphate	mg/L	Lab Analysis		0	



Table 2 - Pollutant Limits Apply (Water)

EPL ID	Pollutant	Units of Measure	Sample Method	Monitoring Frequency	No. of Samples for the Month	Date Sampled	Date Obtained	Min Value	Mean Value	Max or Only Value	EPL Limit	Exceedance (Yes/No)	Comments (Mine Site Sample ID)
11	TSS	mg/L	Lab Analysis	Upon discharge	0	<i>No discharge occurred during sampling period</i>					50	NA	SD4
	Oil & Grease	mg/L	Lab Analysis		0						10	NA	
	pH	pH	In situ		0						6.5-8.5	NA	
13	TSS	mg/L	Lab Analysis	Upon discharge	0	<i>No discharge occurred during sampling period</i>					50	NA	SD2
	Oil & Grease	mg/L	Lab Analysis		0						10	NA	
	pH	pH	In situ		0						6.5-8.5	NA	
18	TSS	mg/L	Lab Analysis	Upon discharge	0	<i>No discharge occurred during sampling period</i>					50	NA	SD7
	Oil & Grease	mg/L	Lab Analysis		0						10	NA	
	pH	pH	In situ		0						6.5-8.5	NA	
24	TDS	mg/L	Lab Analysis	Upon discharge	0	<i>Namoi discharge point – Not constructed or currently utilised.</i>					350	NA	NR1
	pH	pH	In situ		0						6.5-8.5	NA	
27	TSS	mg/L	Lab Analysis	Upon discharge	0	<i>No discharge occurred during sampling period</i>					50	NA	SD8
	Oil & Grease	mg/L	Lab Analysis		0						10	NA	
	pH	pH	In situ		0						6.5-8.5	NA	



Table 3 – Quarterly Attended Noise Monitoring results summary table

Noise monitoring not scheduled in January. Next scheduled sampling is for March 2024.

EPL ID	Date	Measured Levels – dB(A)	Measured Levels – dB(A)	Measured Levels – dB(A)	Measured Levels – dB(A)	Limit(s)	Measurement Periods	Weather Compliant Conditions (D/E/N)			Compliant (Yes/No)	Date Obtained
		Leq 15min Day	Leq 15min Evening	Leq 15min Night	LA1 (1 min) Night							
N5 ¹						<u>Day, Evening & Night:</u> 35 <u>Night</u> <u>LA1 (1 min):</u> 45	Day – 1.5 hrs					
							Evening – 0.5 hrs					
								Night – 1 hr				
N6						<u>Day, Evening & Night:</u> 35 <u>Night</u> <u>LA1 (1 min):</u> 45	Day – 1.5 hrs					
							Evening – 0.5 hrs					
								Night – 1 hr				
N8 ¹						<u>Day, Evening & Night:</u> 35 <u>Night</u> <u>LA1 (1 min):</u> 45	Day – 1.5 hrs					
							Evening – 0.5 hrs					
								Night – 1 hr				
N9 ¹						<u>Day, Evening & Night:</u> 35 <u>Night</u> <u>LA1 (1 min):</u> 45	Day – 1.5 hrs					
							Evening – 0.5 hrs					
								Night – 1 hr				

Figure 1 – EPL 12789 Monitoring Locations





NARRABRI MINE – MONTHLY MONITORING SUMMARY

Site Information

EPL No: 12789

EPA Website Link: <http://www.epa.nsw.gov.au/prpoeoapp/ViewPOEOLicence.aspx?DOCID=106922&SYSUID=1&LICID=12789>

Licensee: Narrabri Coal Operations Pty Ltd

Licensee Address: Narrabri Mine, 10 Kurrajong Creek Road, BAAN BAA NSW 2390

EPL Monitoring Points: See Figure 1 below

Sampling Period: February 2024

Obtained Date: 14/03/2024

Publication Date: 19/03/2024

Table 1 – No Pollutant Limits Apply

EPL ID	Pollutant	Units of Measure	Sample Method	Monitoring Frequency	No. of Samples for the Month	Dates Sampled	Date Obtained	Min Value	Mean Value	Median Value	Max or Only Value
ND3	Deposited Matter	g/m ² /month	Lab Analysis	Once a month (min. 4 weeks)	1	15/02/2024	14/03/2024	NA	NA	NA	0.5
11 (SD4)	Conductivity	µs/cm	In situ	Upon discharge (within 12 hours)	<i>No discharge occurred during sampling period (SD4)</i>						
	TOC	mg/L	Lab Analysis								
13 (SD2)	Conductivity	µs/cm	In situ	Upon discharge (within 12 hours)	<i>No discharge occurred during sampling period (SD2)</i>						
	TOC	mg/L	Lab Analysis								
14 (KC1US)	Conductivity	µs/cm	In situ	In the event of flow during the quarter & after each wet weather discharge from points 11, 13, 18,27	<i>No flow events and/or mine discharge occurred during sampling period (KC1US)</i>						
	TOC	mg/L	Lab Analysis								
	Oil & Grease	mg/L	Lab Analysis								
	pH	pH	In situ								
15 (KC1DS)	TSS	mg/L	Lab Analysis	In the event of flow during the quarter & after each wet weather discharge from points 11, 13, 18,27	<i>No flow events and/or mine discharge occurred during sampling period (KC1DS)</i>						
	Conductivity	µs/cm	In situ								
	TOC	mg/L	Lab Analysis								
	Oil & Grease	mg/L	Lab Analysis								
	pH	pH	In situ								

16 (KC2US)	Conductivity	µs/cm	In situ	In the event of flow during the quarter & after each wet weather discharge from points 11, 13, 18,27	<i>No flow events and/or mine discharge occurred during sampling period (KC2US)</i>
	TOC	mg/L	Lab Analysis		
	Oil & Grease	mg/L	Lab Analysis		
	pH	pH	In situ		
	TSS	mg/L	Lab Analysis		
17 (KC2DS)	Conductivity	µs/cm	In situ	In the event of flow during the quarter & after each wet weather discharge from points 11, 13, 18,27	<i>No flow events and/or mine discharge occurred during sampling period (KC2DS)</i>
	TOC	mg/L	Lab Analysis		
	Oil & Grease	mg/L	Lab Analysis		
	pH	pH	In situ		
	TSS	mg/L	Lab Analysis		
18 (SD7)	Conductivity	µs/cm	In Situ	Upon discharge (within 12 hours)	<i>No discharge occurred during sampling period (SD7)</i>
	TOC	mg/L	Lab Analysis		
19 (KCUS)	Conductivity	µs/cm	In situ	In the event of flow during the quarter & after each wet weather discharge from points 11, 13, 18,27	<i>No flow events and/or mine discharge occurred during sampling period (KCUS)</i>
	TOC	mg/L	Lab Analysis		
	Oil & Grease	mg/L	Lab Analysis		
	pH	pH	In situ		
	TSS	mg/L	Lab Analysis		
20 (KCDS)	Conductivity	µs/cm	In situ	In the event of flow during the quarter & after each wet weather discharge	<i>No flow events and/or mine discharge occurred during sampling period (KCDS)</i>
	TOC	mg/L	Lab Analysis		
	Oil & Grease	mg/L	Lab Analysis		
	pH	pH	In situ		

	TSS	mg/L	Lab Analysis	from points 11, 13, 18,27		
21 (PCa)	Conductivity	µs/cm	In situ	In the event of flow during the quarter & after each wet weather discharge from points 11, 13, 18,27	<i>No flow events and/or mine discharge occurred during sampling period (PCa)</i>	
	TOC	mg/L	Lab Analysis			
	Oil & Grease	mg/L	Lab Analysis			
	pH	pH	In situ			
	TSS	mg/L	Lab Analysis			
22 (PC1)	Conductivity	µs/cm	In situ	In the event of flow during the quarter & after each wet weather discharge from points 11, 13, 18,27	<i>No flow events and/or mine discharge occurred during sampling period (PC1)</i>	
	TOC	mg/L	Lab Analysis			
	Oil & Grease	mg/L	Lab Analysis			
	pH	pH	In situ			
	TSS	mg/L	Lab Analysis			
24 (NR1)	pH	pH	In situ	Upon Discharge (within 4 hrs)	<i>Namoi discharge point – Not constructed or currently utilised (NR1)</i>	
	TDS	mg/L	Lab Analysis			
25 (NRUS)	pH	pH	In situ	Upon Discharge (within 4 hrs)	<i>Namoi discharge point – Not constructed or currently utilised (NRUS)</i>	
	TDS	mg/L	Lab Analysis			
26 (NRDS)	pH	pH	In situ	Upon Discharge (within 4 hrs)	<i>Namoi discharge point – Not constructed or currently utilised (NRDS)</i>	
	TDS	mg/L	Lab Analysis			
28 (P28)	Conductivity	µs/cm	In situ	Quarterly	0	<i>Not scheduled for sampling during sampling period</i>
	pH	pH	In situ		0	
	SWL	mbtoc	In situ		0	
	Bicarbonate	mg/L	Lab Analysis		0	

	Calcium	mg/L	Lab Analysis		0	
	Carbonate	mg/L	Lab Analysis		0	
	Chloride	mg/L	Lab Analysis		0	
	Magnesium	mg/L	Lab Analysis		0	
	Potassium	mg/L	Lab Analysis		0	
	Sodium	mg/L	Lab Analysis		0	
	Sulphate	mg/L	Lab Analysis		0	
29 (P29)	Conductivity	µs/cm	Lab Analysis	Quarterly	0	<i>Not scheduled for sampling during sampling period</i>
	pH	pH	Lab Analysis		0	
	SWL	mbtoc	Lab Analysis		0	
	Bicarbonate	mg/L	Lab Analysis		0	
	Calcium	mg/L	Lab Analysis		0	
	Carbonate	mg/L	Lab Analysis		0	
	Chloride	mg/L	Lab Analysis		0	
	Magnesium	mg/L	Lab Analysis		0	
	Potassium	mg/L	Lab Analysis		0	
	Sodium	mg/L	Lab Analysis		0	

	Sulphate	mg/L	Lab Analysis		0	
30 (P30)	Conductivity	µs/cm	Lab Analysis	Quarterly	0	<i>Not scheduled for sampling during sampling period</i>
	pH	pH	Lab Analysis		0	
	SWL	mbtoc	Lab Analysis		0	
	Bicarbonate	mg/L	Lab Analysis		0	
	Calcium	mg/L	Lab Analysis		0	
	Carbonate	mg/L	Lab Analysis		0	
	Chloride	mg/L	Lab Analysis		0	
	Magnesium	mg/L	Lab Analysis		0	
	Potassium	mg/L	Lab Analysis		0	
	Sodium	mg/L	Lab Analysis		0	
	Sulphate	mg/L	Lab Analysis		0	
31 (P31)	Conductivity	µs/cm	Lab Analysis	Quarterly	0	<i>Not scheduled for sampling during sampling period</i>
	pH	pH	Lab Analysis		0	
	SWL	mbtoc	Lab Analysis		0	
	Bicarbonate	mg/L	Lab Analysis		0	
	Calcium	mg/L	Lab Analysis		0	

	Carbonate	mg/L	Lab Analysis		0	
	Chloride	mg/L	Lab Analysis		0	
	Magnesium	mg/L	Lab Analysis		0	
	Potassium	mg/L	Lab Analysis		0	
	Sodium	mg/L	Lab Analysis		0	
	Sulphate	mg/L	Lab Analysis		0	
32 (P32)	Conductivity	µs/cm	Lab Analysis	Quarterly	0	<i>Not scheduled for sampling during sampling period</i>
	pH	pH	Lab Analysis		0	
	SWL	mbtoc	Lab Analysis		0	
	Bicarbonate	mg/L	Lab Analysis		0	
	Calcium	mg/L	Lab Analysis		0	
	Carbonate	mg/L	Lab Analysis		0	
	Chloride	mg/L	Lab Analysis		0	
	Magnesium	mg/L	Lab Analysis		0	
	Potassium	mg/L	Lab Analysis		0	
	Sodium	mg/L	Lab Analysis		0	
	Sulphate	mg/L	Lab Analysis		0	

33 (P33)	Conductivity	µs/cm	Lab Analysis	Quarterly	0	<i>Not scheduled for sampling during sampling period</i>
	pH	pH	Lab Analysis		0	
	SWL	mbtoc	Lab Analysis		0	
	Bicarbonate	mg/L	Lab Analysis		0	
	Calcium	mg/L	Lab Analysis		0	
	Carbonate	mg/L	Lab Analysis		0	
	Chloride	mg/L	Lab Analysis		0	
	Magnesium	mg/L	Lab Analysis		0	
	Potassium	mg/L	Lab Analysis		0	
	Sodium	mg/L	Lab Analysis		0	
	Sulphate	mg/L	Lab Analysis		0	
34 (P34)	Conductivity	µs/cm	In situ	Quarterly	0	<i>Not scheduled for sampling during sampling period</i>
	pH	pH	In situ		0	
	SWL	mbtoc	In situ		0	
	Bicarbonate	mg/L	Lab Analysis		0	
	Calcium	mg/L	Lab Analysis		0	
	Carbonate	mg/L	Lab Analysis		0	
	Chloride	mg/L	Lab Analysis		0	
	Magnesium	mg/L	Lab Analysis		0	

	Potassium	mg/L	Lab Analysis		0	
	Sodium	mg/L	Lab Analysis		0	
	Sulphate	mg/L	Lab Analysis		0	
35 (P58)	Conductivity	µs/cm	Lab Analysis	Quarterly	0	<i>Not scheduled for sampling during sampling period</i>
	pH	pH	Lab Analysis		0	
	SWL	mbtoc	Lab Analysis		0	
	Bicarbonate	mg/L	Lab Analysis		0	
	Calcium	mg/L	Lab Analysis		0	
	Carbonate	mg/L	Lab Analysis		0	
	Chloride	mg/L	Lab Analysis		0	
	Magnesium	mg/L	Lab Analysis		0	
	Potassium	mg/L	Lab Analysis		0	
	Sodium	mg/L	Lab Analysis		0	
	Sulfate	mg/L	Lab Analysis		0	
36 (P83)	Conductivity	µs/cm	In situ	Quarterly	0	<i>Not scheduled for sampling during sampling period</i>
	pH	pH	In situ		0	
	SWL	mbtoc	In situ		0	
	Bicarbonate	mg/L	Lab Analysis		0	
	Calcium	mg/L	Lab Analysis		0	

	Carbonate	mg/L	Lab Analysis		0	
	Chloride	mg/L	Lab Analysis		0	
	Magnesium	mg/L	Lab Analysis		0	
	Potassium	mg/L	Lab Analysis		0	
	Sodium	mg/L	Lab Analysis		0	
	Sulphate	mg/L	Lab Analysis		0	
37 (P84)	Conductivity	µs/cm	In situ	Quarterly	0	<i>Not scheduled for sampling during sampling period</i>
	pH	pH	In situ		0	
	SWL	mbtoc	In situ		0	
	Bicarbonate	mg/L	Lab Analysis		0	
	Calcium	mg/L	Lab Analysis		0	
	Carbonate	mg/L	Lab Analysis		0	
	Chloride	mg/L	Lab Analysis		0	
	Magnesium	mg/L	Lab Analysis		0	
	Potassium	mg/L	Lab Analysis		0	
	Sodium	mg/L	Lab Analysis		0	
	Sulphate	mg/L	Lab Analysis		0	
38 (P85)	Conductivity	µs/cm	In situ		0	
	pH	pH	In situ		0	
	SWL	mbtoc	In situ		0	

	Bicarbonate	mg/L	Lab Analysis	Quarterly	0	<i>Not scheduled for sampling during sampling period</i>
	Calcium	mg/L	Lab Analysis		0	
	Carbonate	mg/L	Lab Analysis		0	
	Chloride	mg/L	Lab Analysis		0	
	Magnesium	mg/L	Lab Analysis		0	
	Potassium	mg/L	Lab Analysis		0	
	Sodium	mg/L	Lab Analysis		0	
	Sulfate	mg/L	Lab Analysis		0	
39 (P88)	Conductivity	µs/cm	In situ	Quarterly	0	<i>Not scheduled for sampling during sampling period</i>
	pH	pH	In situ		0	
	SWL	mbtoc	In situ		0	
	Bicarbonate	mg/L	Lab Analysis		0	
	Calcium	mg/L	Lab Analysis		0	
	Carbonate	mg/L	Lab Analysis		0	
	Chloride	mg/L	Lab Analysis		0	
	Magnesium	mg/L	Lab Analysis		0	
	Potassium	mg/L	Lab Analysis		0	
	Sodium	mg/L	Lab Analysis		0	
	Sulfate	mg/L	Lab Analysis		0	

40 (P89)	Conductivity	µs/cm	In situ	Quarterly	0	<i>Not scheduled for sampling during sampling period</i>
	pH	pH	In situ		0	
	SWL	mbtoc	In situ		0	
	Bicarbonate	mg/L	Lab Analysis		0	
	Calcium	mg/L	Lab Analysis		0	
	Carbonate	mg/L	Lab Analysis		0	
	Chloride	mg/L	Lab Analysis		0	
	Magnesium	mg/L	Lab Analysis		0	
	Potassium	mg/L	Lab Analysis		0	
	Sodium	mg/L	Lab Analysis		0	
	Sulphate	mg/L	Lab Analysis		0	

Table 2 - Pollutant Limits Apply (Water)

EPL ID	Pollutant	Units of Measure	Sample Method	Monitoring Frequency	No. of Samples for the Month	Date Sampled	Date Obtained	Min Value	Mean Value	Max or Only Value	EPL Limit	Exceedance (Yes/No)	Comments (Mine Site Sample ID)
11	TSS	mg/L	Lab Analysis	Upon discharge	0	<i>No discharge occurred during sampling period</i>					50	NA	SD4
	Oil & Grease	mg/L	Lab Analysis		0						10	NA	
	pH	pH	In situ		0						6.5-8.5	NA	
13	TSS	mg/L	Lab Analysis	Upon discharge	0	<i>No discharge occurred during sampling period</i>					50	NA	SD2
	Oil & Grease	mg/L	Lab Analysis		0						10	NA	
	pH	pH	In situ		0						6.5-8.5	NA	
18	TSS	mg/L	Lab Analysis	Upon discharge	0	<i>No discharge occurred during sampling period</i>					50	NA	SD7
	Oil & Grease	mg/L	Lab Analysis		0						10	NA	
	pH	pH	In situ		0						6.5-8.5	NA	
24	TDS	mg/L	Lab Analysis	Upon discharge	0	<i>Namoi discharge point – Not constructed or currently utilised.</i>					350	NA	NR1
	pH	pH	In situ		0						6.5-8.5	NA	
27	TSS	mg/L	Lab Analysis	Upon discharge	0	<i>No discharge occurred during sampling period</i>					50	NA	SD8
	Oil & Grease	mg/L	Lab Analysis		0						10	NA	
	pH	pH	In situ		0						6.5-8.5	NA	

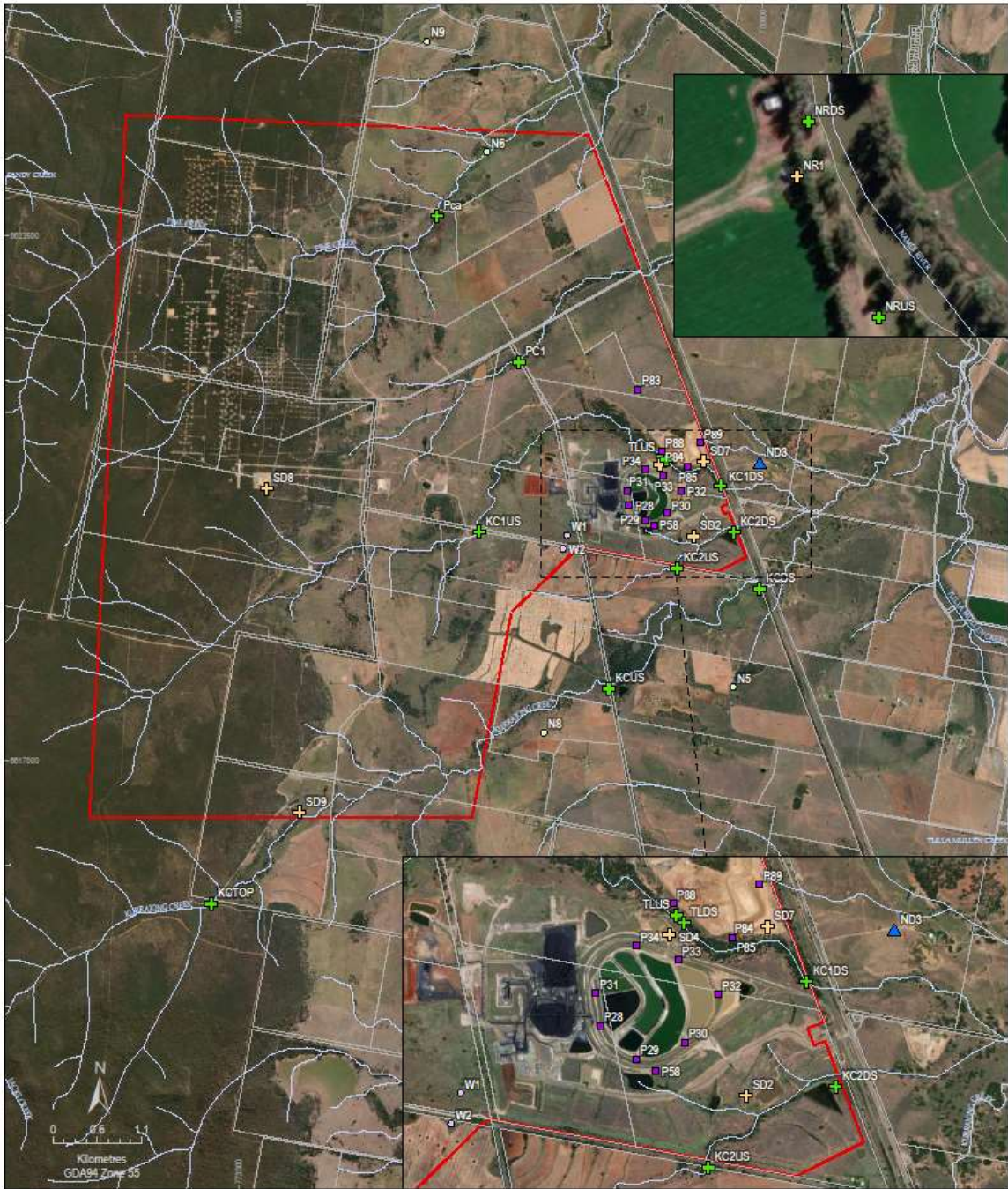


Table 3 – Quarterly Attended Noise Monitoring results summary table

Noise monitoring not scheduled in February. Next scheduled sampling is for March 2024.

EPL ID	Date	Measured Levels – dB(A)	Measured Levels – dB(A)	Measured Levels – dB(A)	Measured Levels – dB(A)	Limit(s)	Measurement Periods	Weather Compliant Conditions (D/E/N)			Compliant (Yes/No)	Date Obtained
		Leq 15min Day	Leq 15min Evening	Leq 15min Night	LA1 (1 min) Night							
N5 ¹						<u>Day, Evening & Night:</u> 35 <u>Night</u> <u>LA1 (1 min):</u> 45	Day – 1.5 hrs					
							Evening – 0.5 hrs					
								Night – 1 hr				
N6						<u>Day, Evening & Night:</u> 35 <u>Night</u> <u>LA1 (1 min):</u> 45	Day – 1.5 hrs					
							Evening – 0.5 hrs					
								Night – 1 hr				
N8 ¹						<u>Day, Evening & Night:</u> 35 <u>Night</u> <u>LA1 (1 min):</u> 45	Day – 1.5 hrs					
							Evening – 0.5 hrs					
								Night – 1 hr				
N9 ¹						<u>Day, Evening & Night:</u> 35 <u>Night</u> <u>LA1 (1 min):</u> 45	Day – 1.5 hrs					
							Evening – 0.5 hrs					
								Night – 1 hr				

Figure 1 – EPL 12789 Monitoring Locations



- LEGEND**
- ML1609
 - Lot boundary
 - Watercourses
 - + Monitoring locations
 - + Surface water quality monitoring
 - + Licensed discharge point
 - ▲ Ambient air quality monitoring
 - Groundwater monitoring - standpipe single
 - Meteorological station
 - Noise monitoring



NARRABRI MINE – MONTHLY MONITORING SUMMARY

Site Information

EPL No: 12789

EPA Website Link: <http://www.epa.nsw.gov.au/prpoeoapp/ViewPOEOLicence.aspx?DOCID=106922&SYSUID=1&LICID=12789>

Licensee: Narrabri Coal Operations Pty Ltd

Licensee Address: Narrabri Mine, 10 Kurrajong Creek Road, BAAN BAA NSW 2390

EPL Monitoring Points: See Figure 1 below

Sampling Period: March 2024

Obtained Date: 9/4/2024

Publication Date: 19/04/2024

Table 1 – No Pollutant Limits Apply

EPL ID	Pollutant	Units of Measure	Sample Method	Monitoring Frequency	No. of Samples for the Month	Dates Sampled	Date Obtained	Min Value	Mean Value	Median Value	Max or Only Value
ND3	Deposited Matter	g/m ² /month	Lab Analysis	Once a month (min. 4 weeks)	1	14/03/2024	03/04/2024	NA	NA	NA	0.5
11 (SD4)	Conductivity	µs/cm	In situ	Upon discharge (within 12 hours)	<i>No discharge occurred during sampling period (SD4)</i>						
	TOC	mg/L	Lab Analysis								
13 (SD2)	Conductivity	µs/cm	In situ	Upon discharge (within 12 hours)	<i>No discharge occurred during sampling period (SD2)</i>						
	TOC	mg/L	Lab Analysis								
	TOC	mg/L	Lab Analysis								
14 (KC1US)	Conductivity	µs/cm	In situ	In the event of flow during the quarter & after each wet weather discharge from points 11, 13, 18,27, 43	0	Ambient Flow 20/03/24 (quarterly check completed, no flow)	NA	NA	NA	NA	
	TOC	mg/L	Lab Analysis		0		NA	NA	NA	NA	
	Oil & Grease	mg/L	Lab Analysis		0		NA	NA	NA	NA	
	pH	pH	In situ		0		NA	NA	NA	NA	
	TSS	mg/L	Lab Analysis		0		NA	NA	NA	NA	
15 (KC1DS)	Conductivity	µs/cm	In situ	In the event of flow during the quarter & after each wet weather discharge from points 11, 13, 18,27, 43	0	Ambient Flow 20/03/24 (quarterly check completed, no flow)	NA	NA	NA	NA	
	TOC	mg/L	Lab Analysis		0		NA	NA	NA	NA	
	Oil & Grease	mg/L	Lab Analysis		0		NA	NA	NA	NA	
	pH	pH	In situ		0		NA	NA	NA	NA	
	TSS	mg/L	Lab Analysis		0		NA	NA	NA	NA	

16 (KC2US)	Conductivity	µs/cm	In situ	In the event of flow during the quarter & after each wet weather discharge from points 11, 13, 18,27, 43	0	Ambient Flow 20/03/24 (quarterly check completed, no flow)	NA	NA	NA	NA
	TOC	mg/L	Lab Analysis		0		NA	NA	NA	NA
	Oil & Grease	mg/L	Lab Analysis		0		NA	NA	NA	NA
	pH	pH	In situ		0		NA	NA	NA	NA
	TSS	mg/L	Lab Analysis		0		NA	NA	NA	NA
17 (KC2DS)	Conductivity	µs/cm	In situ	In the event of flow during the quarter & after each wet weather discharge from points 11, 13, 18,27,43	0	Ambient Flow 20/03/24 (quarterly check completed, no flow)	NA	NA	NA	NA
	TOC	mg/L	Lab Analysis		0		NA	NA	NA	NA
	Oil & Grease	mg/L	Lab Analysis		0		NA	NA	NA	NA
	pH	pH	In situ		0		NA	NA	NA	NA
	TSS	mg/L	Lab Analysis		0		NA	NA	NA	NA
18 (SD7)	Conductivity	µs/cm	In Situ	Upon discharge (within 12 hours)	<i>No discharge occurred during sampling period (SD7)</i>					
	TOC	mg/L	Lab Analysis							
19 (KCUS)	Conductivity	µs/cm	In situ	In the event of flow during the quarter & after each wet weather discharge from points 11, 13, 18,27,43	0	Ambient Flow 20/03/24 (quarterly check completed, no flow)	NA	NA	NA	NA
	TOC	mg/L	Lab Analysis		0		NA	NA	NA	NA
	Oil & Grease	mg/L	Lab Analysis		0		NA	NA	NA	NA
	pH	pH	In situ		0		NA	NA	NA	NA
	TSS	mg/L	Lab Analysis		0		NA	NA	NA	NA
20 (KCDS)	Conductivity	µs/cm	In situ	In the event of flow during the quarter & after each wet weather	0	Ambient Flow 20/03/24 (quarterly check completed, no flow)	NA	NA	NA	NA
	TOC	mg/L	Lab Analysis		0		NA	NA	NA	NA
	Oil & Grease	mg/L	Lab Analysis		0		NA	NA	NA	NA

	pH	pH	In situ	discharge from points 11, 13, 18,27,43	0		NA	NA	NA	NA
	TSS	mg/L	Lab Analysis		0		NA	NA	NA	NA
21 (PCa)	Conductivity	µs/cm	In situ	In the event of flow during the quarter & after each wet weather discharge from points 11, 13, 18,27,43	0	Ambient Flow 20/03/24 (quarterly check completed, no flow)	NA	NA	NA	NA
	TOC	mg/L	Lab Analysis		0		NA	NA	NA	NA
	Oil & Grease	mg/L	Lab Analysis		0		NA	NA	NA	NA
	pH	pH	In situ		0		NA	NA	NA	NA
	TSS	mg/L	Lab Analysis		0		NA	NA	NA	NA
22 (PC1)	Conductivity	µs/cm	In situ	In the event of flow during the quarter & after each wet weather discharge from points 11, 13, 18,27,43	0	Ambient Flow 20/03/24 (quarterly check completed, no flow)	NA	NA	NA	NA
	TOC	mg/L	Lab Analysis		0		NA	NA	NA	NA
	Oil & Grease	mg/L	Lab Analysis		0		NA	NA	NA	NA
	pH	pH	In situ		0		NA	NA	NA	NA
	TSS	mg/L	Lab Analysis		0		NA	NA	NA	NA
24 (NR1)	pH	pH	In situ	Upon Discharge (within 4 hrs)	<i>Namoi discharge point – Not constructed or currently utilised (NR1)</i>					
	TDS	mg/L	Lab Analysis							
25 (NRUS)	pH	pH	In situ	Upon Discharge (within 4 hrs)	<i>Namoi discharge point – Not constructed or currently utilised (NRUS)</i>					
	TDS	mg/L	Lab Analysis							
26 (NRDS)	pH	pH	In situ	Upon Discharge (within 4 hrs)	<i>Namoi discharge point – Not constructed or currently utilised (NRDS)</i>					
	TDS	mg/L	Lab Analysis							
28 (P28)	Conductivity	µs/cm	In situ	Quarterly	0	<i>Bore was dry during sampling period</i>				
	pH	pH	In situ		0					
	SWL	mbtoc	In situ		0					

	Bicarbonate	mg/L	Lab Analysis		0						
	Calcium	mg/L	Lab Analysis		0						
	Carbonate	mg/L	Lab Analysis		0						
	Chloride	mg/L	Lab Analysis		0						
	Magnesium	mg/L	Lab Analysis		0						
	Potassium	mg/L	Lab Analysis		0						
	Sodium	mg/L	Lab Analysis		0						
	Sulphate	mg/L	Lab Analysis		0						
29 (P29)	Conductivity	µs/cm	In situ	Quarterly	1	20/03/2024	05/04/2024	NA	NA	NA	16460
	pH	pH	In situ		1	20/03/2024	05/04/2024	NA	NA	NA	7.38
	SWL	mbtoc	In situ		1	20/03/2024	05/04/2024	NA	NA	NA	5.18
	Bicarbonate	mg/L	Lab Analysis		1	20/03/2024	05/04/2024	NA	NA	NA	652
	Calcium	mg/L	Lab Analysis		1	20/03/2024	05/04/2024	NA	NA	NA	126
	Carbonate	mg/L	Lab Analysis		1	20/03/2024	05/04/2024	NA	NA	NA	<1
	Chloride	mg/L	Lab Analysis		1	20/03/2024	05/04/2024	NA	NA	NA	5050
	Magnesium	mg/L	Lab Analysis		1	20/03/2024	05/04/2024	NA	NA	NA	284
	Potassium	mg/L	Lab Analysis		1	20/03/2024	05/04/2024	NA	NA	NA	6
	Sodium	mg/L	Lab Analysis		1	20/03/2024	05/04/2024	NA	NA	NA	3090

	Sulphate	mg/L	Lab Analysis		1	20/03/2024	05/04/2024	NA	NA	NA	606
30 (P30)	Conductivity	µs/cm	In situ	Quarterly	1	20/03/2024	05/04/2024	NA	NA	NA	16800
	pH	pH	In situ		1	20/03/2024	05/04/2024	NA	NA	NA	7.1
	SWL	mbtoc	In situ		1	20/03/2024	05/04/2024	NA	NA	NA	12.07
	Bicarbonate	mg/L	Lab Analysis		1	20/03/2024	05/04/2024	NA	NA	NA	856
	Calcium	mg/L	Lab Analysis		1	20/03/2024	05/04/2024	NA	NA	NA	146
	Carbonate	mg/L	Lab Analysis		1	20/03/2024	05/04/2024	NA	NA	NA	<1
	Chloride	mg/L	Lab Analysis		1	20/03/2024	05/04/2024	NA	NA	NA	4850
	Magnesium	mg/L	Lab Analysis		1	20/03/2024	05/04/2024	NA	NA	NA	357
	Potassium	mg/L	Lab Analysis		1	20/03/2024	05/04/2024	NA	NA	NA	17
	Sodium	mg/L	Lab Analysis		1	20/03/2024	05/04/2024	NA	NA	NA	3160
	Sulphate	mg/L	Lab Analysis		1	20/03/2024	05/04/2024	NA	NA	NA	813
31 (P31)	Conductivity	µs/cm	In situ	Quarterly	1	20/03/2024	05/04/2024	NA	NA	NA	6760
	pH	pH	In situ		1	20/03/2024	05/04/2024	NA	NA	NA	7.31
	SWL	mbtoc	In situ		1	20/03/2024	05/04/2024	NA	NA	NA	16.47
	Bicarbonate	mg/L	Lab Analysis		1	20/03/2024	05/04/2024	NA	NA	NA	837
	Calcium	mg/L	Lab Analysis		1	20/03/2024	05/04/2024	NA	NA	NA	86
	Carbonate	mg/L	Lab Analysis		1	20/03/2024	05/04/2024	NA	NA	NA	<1
	Chloride	mg/L	Lab Analysis		1	20/03/2024	05/04/2024	NA	NA	NA	1650

	Magnesium	mg/L	Lab Analysis		1	20/03/2024	05/04/2024	NA	NA	NA	161
	Potassium	mg/L	Lab Analysis		1	20/03/2024	05/04/2024	NA	NA	NA	12
	Sodium	mg/L	Lab Analysis		1	20/03/2024	05/04/2024	NA	NA	NA	1210
	Sulphate	mg/L	Lab Analysis		1	20/03/2024	05/04/2024	NA	NA	NA	287
32 (P32)	Conductivity	µs/cm	In situ	Quarterly	1	20/03/2024	05/04/2024	NA	NA	NA	1989
	pH	pH	In situ		1	20/03/2024	05/04/2024	NA	NA	NA	8.29
	SWL	mbtoc	In situ		1	20/03/2024	05/04/2024	NA	NA	NA	8.16
	Bicarbonate	mg/L	Lab Analysis		1	20/03/2024	05/04/2024	NA	NA	NA	835
	Calcium	mg/L	Lab Analysis		1	20/03/2024	05/04/2024	NA	NA	NA	2
	Carbonate	mg/L	Lab Analysis		1	20/03/2024	05/04/2024	NA	NA	NA	43
	Chloride	mg/L	Lab Analysis		1	20/03/2024	05/04/2024	NA	NA	NA	101
	Magnesium	mg/L	Lab Analysis		1	20/03/2024	05/04/2024	NA	NA	NA	5
	Potassium	mg/L	Lab Analysis		1	20/03/2024	05/04/2024	NA	NA	NA	<1
	Sodium	mg/L	Lab Analysis		1	20/03/2024	05/04/2024	NA	NA	NA	501
	Sulphate	mg/L	Lab Analysis		1	20/03/2024	05/04/2024	NA	NA	NA	62
33	Conductivity	µs/cm	In situ	Quarterly	0	20/03/2024	05/04/2024	NA	NA	NA	16490
	pH	pH	In situ		0	20/03/2024	05/04/2024	NA	NA	NA	7.23
	SWL	mbtoc	In situ		0	20/03/2024	05/04/2024	NA	NA	NA	15.28
	Bicarbonate	mg/L	Lab Analysis		0	20/03/2024	05/04/2024	NA	NA	NA	774
	Calcium	mg/L	Lab Analysis		0	20/03/2024	05/04/2024	NA	NA	NA	94

(P33)	Carbonate	mg/L	Lab Analysis		0	20/03/2024	05/04/2024	NA	NA	NA	<1
	Chloride	mg/L	Lab Analysis		0	20/03/2024	05/04/2024	NA	NA	NA	5090
	Magnesium	mg/L	Lab Analysis		0	20/03/2024	05/04/2024	NA	NA	NA	287
	Potassium	mg/L	Lab Analysis		0	20/03/2024	05/04/2024	NA	NA	NA	12
	Sodium	mg/L	Lab Analysis		0	20/03/2024	05/04/2024	NA	NA	NA	3500
	Sulphate	mg/L	Lab Analysis		0	20/03/2024	05/04/2024	NA	NA	NA	893
34 (P34)	Conductivity	µs/cm	In situ	Quarterly	0	<i>Bore was dry during sampling period</i>					
	pH	pH	In situ		0						
	SWL	mbtoc	In situ		0						
	Bicarbonate	mg/L	Lab Analysis		0						
	Calcium	mg/L	Lab Analysis		0						
	Carbonate	mg/L	Lab Analysis		0						
	Chloride	mg/L	Lab Analysis		0						
	Magnesium	mg/L	Lab Analysis		0						
	Potassium	mg/L	Lab Analysis		0						
	Sodium	mg/L	Lab Analysis		0						
	Sulphate	mg/L	Lab Analysis		0						
35 (P58)	Conductivity	µs/cm	In situ	Quarterly	1	20/03/2024	05/04/2024	NA	NA	NA	11960
	pH	pH	In situ		1	20/03/2024	05/04/2024	NA	NA	NA	6.93
	SWL	mbtoc	In situ		1	20/03/2024	05/04/2024	NA	NA	NA	19.95

	Bicarbonate	mg/L	Lab Analysis		1	20/03/2024	05/04/2024	NA	NA	NA	4940
	Calcium	mg/L	Lab Analysis		1	20/03/2024	05/04/2024	NA	NA	NA	37
	Carbonate	mg/L	Lab Analysis		1	20/03/2024	05/04/2024	NA	NA	NA	<1
	Chloride	mg/L	Lab Analysis		1	20/03/2024	05/04/2024	NA	NA	NA	1590
	Magnesium	mg/L	Lab Analysis		1	20/03/2024	05/04/2024	NA	NA	NA	70
	Potassium	mg/L	Lab Analysis		1	20/03/2024	05/04/2024	NA	NA	NA	79
	Sodium	mg/L	Lab Analysis		1	20/03/2024	05/04/2024	NA	NA	NA	2990
	Sulfate	mg/L	Lab Analysis		1	20/03/2024	05/04/2024	NA	NA	NA	100
36 (P83)	Conductivity	µs/cm	In situ	Monthly	0	<i>Bore was dry during sampling period</i>					
	pH	pH	In situ		0						
	SWL	mbtoc	In situ		0						
	Bicarbonate	mg/L	Lab Analysis		0						
	Calcium	mg/L	Lab Analysis		0						
	Carbonate	mg/L	Lab Analysis		0						
	Chloride	mg/L	Lab Analysis		0						
	Magnesium	mg/L	Lab Analysis		0						
	Potassium	mg/L	Lab Analysis		0						
	Sodium	mg/L	Lab Analysis		0						
	Sulphate	mg/L	Lab Analysis		0						

37 (P84)	Conductivity	µs/cm	In situ	Monthly	1	19/03/2024	08/04/2024	NA	NA	NA	18850
	pH	pH	In situ		1	19/03/2024	08/04/2024	NA	NA	NA	6.75
	SWL	mbtoc	In situ		1	19/03/2024	08/04/2024	NA	NA	NA	13.57
	Bicarbonate	mg/L	Lab Analysis		1	19/03/2024	08/04/2024	NA	NA	NA	2630
	Calcium	mg/L	Lab Analysis		1	19/03/2024	08/04/2024	NA	NA	NA	99
	Carbonate	mg/L	Lab Analysis		1	19/03/2024	08/04/2024	NA	NA	NA	<1
	Chloride	mg/L	Lab Analysis		1	19/03/2024	08/04/2024	NA	NA	NA	6140
	Magnesium	mg/L	Lab Analysis		1	19/03/2024	08/04/2024	NA	NA	NA	383
	Potassium	mg/L	Lab Analysis		1	19/03/2024	08/04/2024	NA	NA	NA	36
	Sodium	mg/L	Lab Analysis		1	19/03/2024	08/04/2024	NA	NA	NA	4490
	Sulphate	mg/L	Lab Analysis		1	19/03/2024	08/04/2024	NA	NA	NA	1140
38 (P85)	Conductivity	µs/cm	In situ	Monthly	0	<i>Bore was dry during sampling period</i>					
	pH	pH	In situ		0						
	SWL	mbtoc	In situ		0						
	Bicarbonate	mg/L	Lab Analysis		0						
	Calcium	mg/L	Lab Analysis		0						
	Carbonate	mg/L	Lab Analysis		0						
	Chloride	mg/L	Lab Analysis		0						
	Magnesium	mg/L	Lab Analysis		0						
	Potassium	mg/L	Lab Analysis		0						

	Sodium	mg/L	Lab Analysis		0	
	Sulfate	mg/L	Lab Analysis		0	
39 (P88)	Conductivity	µs/cm	In situ	Monthly	0	<i>Bore was dry during sampling period</i>
	pH	pH	In situ		0	
	SWL	mbtoc	In situ		0	
	Bicarbonate	mg/L	Lab Analysis		0	
	Calcium	mg/L	Lab Analysis		0	
	Carbonate	mg/L	Lab Analysis		0	
	Chloride	mg/L	Lab Analysis		0	
	Magnesium	mg/L	Lab Analysis		0	
	Potassium	mg/L	Lab Analysis		0	
	Sodium	mg/L	Lab Analysis		0	
	Sulfate	mg/L	Lab Analysis		0	
40 (P89)	Conductivity	µs/cm	In situ	Monthly	0	<i>Bore was dry during sampling period</i>
	pH	pH	In situ		0	
	SWL	mbtoc	In situ		0	
	Bicarbonate	mg/L	Lab Analysis		0	
	Calcium	mg/L	Lab Analysis		0	
	Carbonate	mg/L	Lab Analysis		0	
	Chloride	mg/L	Lab Analysis		0	

	Magnesium	mg/L	Lab Analysis		0	
	Potassium	mg/L	Lab Analysis		0	
	Sodium	mg/L	Lab Analysis		0	
	Sulphate	mg/L	Lab Analysis		0	
43	Conductivity	µs/cm	In situ	Upon discharge (within 12 hours)	0	<i>No discharge occurred during sampling period (SD9)</i>
	TOC	mg/L	Lab Analysis		0	

Table 2 - Pollutant Limits Apply (Water)

EPL ID	Pollutant	Units of Measure	Sample Method	Monitoring Frequency	No. of Samples for the Month	Date Sampled	Date Obtained	Min Value	Mean Value	Max or Only Value	EPL Limit	Exceedance (Yes/No)	Comments (Mine Site Sample ID)
11	TSS	mg/L	Lab Analysis	Upon discharge	0	<i>No discharge occurred during sampling period</i>					50	NA	SD4
	Oil & Grease	mg/L	Lab Analysis		0						10	NA	
	pH	pH	In situ		0						6.5-8.5	NA	
13	TSS	mg/L	Lab Analysis	Upon discharge	0	<i>No discharge occurred during sampling period</i>					50	NA	SD2
	Oil & Grease	mg/L	Lab Analysis		0						10	NA	
	pH	pH	In situ		0						6.5-8.5	NA	
18	TSS	mg/L	Lab Analysis	Upon discharge	0	<i>No discharge occurred during sampling period</i>					50	NA	SD7
	Oil & Grease	mg/L	Lab Analysis		0						10	NA	
	pH	pH	In situ		0						6.5-8.5	NA	
24	TDS	mg/L	Lab Analysis	Upon discharge	0	<i>Namoi discharge point – Not constructed or currently utilised.</i>					350	NA	NR1
	pH	pH	In situ		0						6.5-8.5	NA	
27	TSS	mg/L	Lab Analysis	Upon discharge	0	<i>No discharge occurred during sampling period</i>					50	NA	SD8
	Oil & Grease	mg/L	Lab Analysis		0						10	NA	
	pH	pH	In situ		0						6.5-8.5	NA	

Table 3 – Quarterly Attended Noise Monitoring results summary table

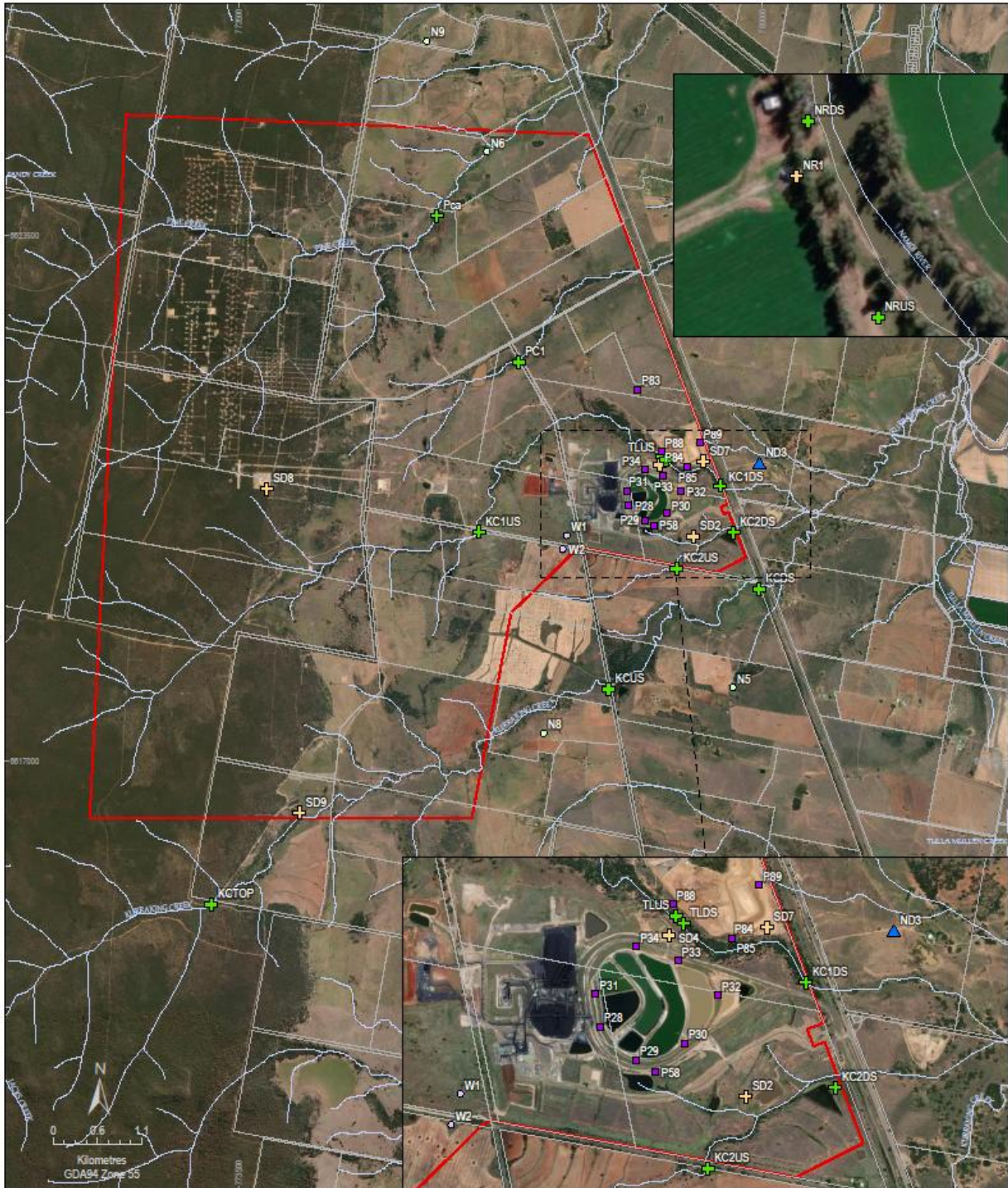
EPL ID	Date	Measured Levels – dB(A)	Measured Levels – dB(A)	Measured Levels – dB(A)	Measured Levels – dB(A)	Limit(s)	Measurement Periods	Weather Compliant Conditions (D/E/N)			Compliant (Yes/No)	Date Obtained
		Leq 15min Day	Leq 15min Evening	Leq 15min Night	LA1 (1 min) Night							
N5 ¹	11/03/2024	I/A	I/A	25	30	<u>Day, Evening & Night:</u> 35 <u>Night</u> <u>LA1 (1 min):</u> 45	Day – 1.5 hrs	Y	Y	Y	Y	9/04/2024
	12/03/2024	I/A	I/A	N/M	N/M		Evening – 0.5 hrs	Y	Y	N	Y	
	13/03/2024	I/A	I/A	N/M	N/M		Night – 1 hr	Y	N	N	Y	
N6	11/03/2024 ²	I/A	N/M	N/M	N/M	<u>Day, Evening & Night:</u> 35 <u>Night</u> <u>LA1 (1 min):</u> 45	Day – 1.5 hrs	Y	Y	N	Y	
	12/03/2024 ²	30	I/A	27	33		Evening – 0.5 hrs	Y	Y	N	Y	
	13/03/2024 ²	27	N/M	31	38		Night – 1 hr	Y	N	Y	Y	
N8 ¹	11/03/2024	I/A	34	33	40	<u>Day, Evening & Night:</u> 35 <u>Night</u> <u>LA1 (1 min):</u> 45	Day – 1.5 hrs	Y	N	Y	Y	
	12/03/2024	I/A	32	33	34		Evening – 0.5 hrs	Y	N	Y	Y	
	13/03/2024	25	I/A	31	39		Night – 1 hr	Y	Y	Y	Y	
N9 ¹	11/03/2024	I/A	I/A	I/A	I/A	<u>Day, Evening & Night:</u> 35 <u>Night</u> <u>LA1 (1 min):</u> 45	Day – 1.5 hrs	Y	Y	Y	Y	
	12/03/2024	I/A	I/A	28	29		Evening – 0.5 hrs	Y	Y	Y	Y	
	13/03/2024	I/A	I/A	32	36		Night – 1 hr	Y	Y	N	Y	

I/A = Inaudible, N/M = Not Measurable

Note 1: Property is owned by Narrabri Coal Operations. Noise limits contained in Conditions 1-3, Schedule 4 of PA 08_0144 Mod 2 and the identical limits contained in condition L3 of Environment Protection Licence No 12789 are not applicable.

Note 2: Evening and Night monitoring conducted on this date, Day monitoring conducted during the following day period.

Figure 1 – EPL 12789 Monitoring Locations



LEGEND

- | | |
|--------------|---|
| ML1609 | Monitoring locations |
| Lot boundary | Surface water quality monitoring |
| Watercourses | Licenced discharge point |
| | Ambient air quality monitoring |
| | Groundwater monitoring - standpipe single |
| | Meteorological station |
| | Noise monitoring |

NARRABRI MINE

Figure 1
EPL 12789 Monitoring Locations
February 2024



NARRABRI MINE – MONTHLY MONITORING SUMMARY

Site Information

EPL No: 12789

EPA Website Link: <http://www.epa.nsw.gov.au/prpoeoapp/ViewPOEOLicence.aspx?DOCID=106922&SYSUID=1&LICID=12789>

Licensee: Narrabri Coal Operations Pty Ltd

Licensee Address: Narrabri Mine, 10 Kurrajong Creek Road, BAAN BAA NSW 2390

EPL Monitoring Points: See Figure 1 below

Sampling Period: April 2024

Obtained Date: 29/04/2024

Publication Date: 09/05/2024

Table 1 – No Pollutant Limits Apply

EPL ID	Pollutant	Units of Measure	Sample Method	Monitoring Frequency	No. of Samples for the Month	Dates Sampled	Date Obtained	Min Value	Mean Value	Median Value	Max or Only Value
ND3	Deposited Matter	g/m ² /month	Lab Analysis	Once a month (min. 4 weeks)	1	10/04/2024	29/04/2024	NA	NA	NA	1.3
11 (SD4)	Conductivity	µs/cm	In situ	Upon discharge (within 12 hours)	<i>No discharge occurred during sampling period (SD4)</i>						
	TOC	mg/L	Lab Analysis								
13 (SD2)	Conductivity	µs/cm	In situ	Upon discharge (within 12 hours)	<i>No discharge occurred during sampling period (SD2)</i>						
	TOC	mg/L	Lab Analysis								
14 (KC1US)	Conductivity	µs/cm	In situ	In the event of flow during the quarter & after each wet weather discharge from points 11, 13, 18,27, 43	0	Flow event 05/04/2024 (check completed, no flow)	NA	NA	NA	NA	
	TOC	mg/L	Lab Analysis		0		NA	NA	NA	NA	
	Oil & Grease	mg/L	Lab Analysis		0		NA	NA	NA	NA	
	pH	pH	In situ		0		NA	NA	NA	NA	
	TSS	mg/L	Lab Analysis		0		NA	NA	NA	NA	
15 (KC1DS)	Conductivity	µs/cm	In situ	In the event of flow during the quarter & after each wet weather discharge from points 11, 13, 18,27, 43	0	Flow event 05/04/2024 (check completed, no flow)	NA	NA	NA	NA	
	TOC	mg/L	Lab Analysis		0		NA	NA	NA	NA	
	Oil & Grease	mg/L	Lab Analysis		0		NA	NA	NA	NA	
	pH	pH	In situ		0		NA	NA	NA	NA	
	TSS	mg/L	Lab Analysis		0		NA	NA	NA	NA	



WHITEHAVEN COAL

16 (KC2US)	Conductivity	µs/cm	In situ	In the event of flow during the quarter & after each wet weather discharge from points 11, 13, 18,27, 43	0	Flow event 05/04/2024 (check completed, no flow)	NA	NA	NA	NA
	TOC	mg/L	Lab Analysis		0		NA	NA	NA	NA
	Oil & Grease	mg/L	Lab Analysis		0		NA	NA	NA	NA
	pH	pH	In situ		0		NA	NA	NA	NA
	TSS	mg/L	Lab Analysis		0		NA	NA	NA	NA
17 (KC2DS)	Conductivity	µs/cm	In situ	In the event of flow during the quarter & after each wet weather discharge from points 11, 13, 18,27, 43	0	Flow event 05/04/2024 (check completed, no flow)	NA	NA	NA	NA
	TOC	mg/L	Lab Analysis		0		NA	NA	NA	NA
	Oil & Grease	mg/L	Lab Analysis		0		NA	NA	NA	NA
	pH	pH	In situ		0		NA	NA	NA	NA
	TSS	mg/L	Lab Analysis		0		NA	NA	NA	NA
18 (SD7)	Conductivity	µs/cm	In Situ	Upon discharge (within 12 hours)	<i>No discharge occurred during sampling period (SD7)</i>					
	TOC	mg/L	Lab Analysis							
19 (KCUS)	Conductivity	µs/cm	In situ	In the event of flow during the quarter & after each wet weather discharge from points 11, 13, 18,27, 43	0	Flow event 05/04/2024 (check completed, no flow)	NA	NA	NA	NA
	TOC	mg/L	Lab Analysis		0		NA	NA	NA	NA
	Oil & Grease	mg/L	Lab Analysis		0		NA	NA	NA	NA
	pH	pH	In situ		0		NA	NA	NA	NA
	TSS	mg/L	Lab Analysis		0		NA	NA	NA	NA
20 (KCDS)	Conductivity	µs/cm	In situ	In the event of flow during the quarter &	0	Flow event 05/04/2024 (check completed, no flow)	NA	NA	NA	NA
	TOC	mg/L	Lab Analysis		0		NA	NA	NA	NA



WHITEHAVEN COAL

	Oil & Grease	mg/L	Lab Analysis	after each wet weather discharge from points 11, 13, 18,27, 43	0		NA	NA	NA	NA
	pH	pH	In situ		0		NA	NA	NA	NA
	TSS	mg/L	Lab Analysis		0		NA	NA	NA	NA
21 (PCa)	Conductivity	µs/cm	In situ	In the event of flow during the quarter & after each wet weather discharge from points 11, 13, 18,27, 43	0	Flow event 05/04/2024 (check completed, no flow)	NA	NA	NA	NA
	TOC	mg/L	Lab Analysis		0		NA	NA	NA	NA
	Oil & Grease	mg/L	Lab Analysis		0		NA	NA	NA	NA
	pH	pH	In situ		0		NA	NA	NA	NA
	TSS	mg/L	Lab Analysis		0		NA	NA	NA	NA
22 (PC1)	Conductivity	µs/cm	In situ	In the event of flow during the quarter & after each wet weather discharge from points 11, 13, 18,27, 43	0	Flow event 05/04/2024 (check completed, no flow)	NA	NA	NA	NA
	TOC	mg/L	Lab Analysis		0		NA	NA	NA	NA
	Oil & Grease	mg/L	Lab Analysis		0		NA	NA	NA	NA
	pH	pH	In situ		0		NA	NA	NA	NA
	TSS	mg/L	Lab Analysis		0		NA	NA	NA	NA
24 (NR1)	pH	pH	In situ	Upon Discharge (within 4 hrs)	<i>Namoi discharge point – Not constructed or currently utilised (NR1)</i>					
	TDS	mg/L	Lab Analysis							
25 (NRUS)	pH	pH	In situ	Upon Discharge (within 4 hrs)	<i>Namoi discharge point – Not constructed or currently utilised (NRUS)</i>					
	TDS	mg/L	Lab Analysis							
26 (NRDS)	pH	pH	In situ	Upon Discharge (within 4 hrs)	<i>Namoi discharge point – Not constructed or currently utilised (NRDS)</i>					
	TDS	mg/L	Lab Analysis							
28 (P28)	Conductivity	µs/cm	In situ	Quarterly	0	<i>Not scheduled for sampling during sampling period</i>				
	pH	pH	In situ		0					



	SWL	mbtoc	In situ		0	
	Bicarbonate	mg/L	Lab Analysis		0	
	Calcium	mg/L	Lab Analysis		0	
	Carbonate	mg/L	Lab Analysis		0	
	Chloride	mg/L	Lab Analysis		0	
	Magnesium	mg/L	Lab Analysis		0	
	Potassium	mg/L	Lab Analysis		0	
	Sodium	mg/L	Lab Analysis		0	
	Sulphate	mg/L	Lab Analysis		0	
29 (P29)	Conductivity	µs/cm	Lab Analysis	Quarterly	0	<i>Not scheduled for sampling during sampling period</i>
	pH	pH	Lab Analysis		0	
	SWL	mbtoc	Lab Analysis		0	
	Bicarbonate	mg/L	Lab Analysis		0	
	Calcium	mg/L	Lab Analysis		0	
	Carbonate	mg/L	Lab Analysis		0	
	Chloride	mg/L	Lab Analysis		0	
	Magnesium	mg/L	Lab Analysis		0	
	Potassium	mg/L	Lab Analysis		0	

	Sodium	mg/L	Lab Analysis		0	
	Sulphate	mg/L	Lab Analysis		0	
30 (P30)	Conductivity	µs/cm	Lab Analysis	Quarterly	0	<i>Not scheduled for sampling during sampling period</i>
	pH	pH	Lab Analysis		0	
	SWL	mbtoc	Lab Analysis		0	
	Bicarbonate	mg/L	Lab Analysis		0	
	Calcium	mg/L	Lab Analysis		0	
	Carbonate	mg/L	Lab Analysis		0	
	Chloride	mg/L	Lab Analysis		0	
	Magnesium	mg/L	Lab Analysis		0	
	Potassium	mg/L	Lab Analysis		0	
	Sodium	mg/L	Lab Analysis		0	
	Sulphate	mg/L	Lab Analysis		0	
31 (P31)	Conductivity	µs/cm	Lab Analysis	Quarterly	0	<i>Not scheduled for sampling during sampling period</i>
	pH	pH	Lab Analysis		0	
	SWL	mbtoc	Lab Analysis		0	
	Bicarbonate	mg/L	Lab Analysis		0	



	Calcium	mg/L	Lab Analysis		0	
	Carbonate	mg/L	Lab Analysis		0	
	Chloride	mg/L	Lab Analysis		0	
	Magnesium	mg/L	Lab Analysis		0	
	Potassium	mg/L	Lab Analysis		0	
	Sodium	mg/L	Lab Analysis		0	
	Sulphate	mg/L	Lab Analysis		0	
32 (P32)	Conductivity	µs/cm	Lab Analysis	Quarterly	0	<i>Not scheduled for sampling during sampling period</i>
	pH	pH	Lab Analysis		0	
	SWL	mbtoc	Lab Analysis		0	
	Bicarbonate	mg/L	Lab Analysis		0	
	Calcium	mg/L	Lab Analysis		0	
	Carbonate	mg/L	Lab Analysis		0	
	Chloride	mg/L	Lab Analysis		0	
	Magnesium	mg/L	Lab Analysis		0	
	Potassium	mg/L	Lab Analysis		0	
	Sodium	mg/L	Lab Analysis		0	

	Sulphate	mg/L	Lab Analysis		0	
33 (P33)	Conductivity	µs/cm	Lab Analysis	Quarterly	0	<i>Not scheduled for sampling during sampling period</i>
	pH	pH	Lab Analysis		0	
	SWL	mbtoc	Lab Analysis		0	
	Bicarbonate	mg/L	Lab Analysis		0	
	Calcium	mg/L	Lab Analysis		0	
	Carbonate	mg/L	Lab Analysis		0	
	Chloride	mg/L	Lab Analysis		0	
	Magnesium	mg/L	Lab Analysis		0	
	Potassium	mg/L	Lab Analysis		0	
	Sodium	mg/L	Lab Analysis		0	
	Sulphate	mg/L	Lab Analysis		0	
34 (P34)	Conductivity	µs/cm	In situ	Quarterly	0	<i>Not scheduled for sampling during sampling period</i>
	pH	pH	In situ		0	
	SWL	mbtoc	In situ		0	
	Bicarbonate	mg/L	Lab Analysis		0	
	Calcium	mg/L	Lab Analysis		0	
	Carbonate	mg/L	Lab Analysis		0	
	Chloride	mg/L	Lab Analysis		0	

	Magnesium	mg/L	Lab Analysis		0	
	Potassium	mg/L	Lab Analysis		0	
	Sodium	mg/L	Lab Analysis		0	
	Sulphate	mg/L	Lab Analysis		0	
35 (P58)	Conductivity	µs/cm	Lab Analysis	Quarterly	0	<i>Not scheduled for sampling during sampling period</i>
	pH	pH	Lab Analysis		0	
	SWL	mbtoc	Lab Analysis		0	
	Bicarbonate	mg/L	Lab Analysis		0	
	Calcium	mg/L	Lab Analysis		0	
	Carbonate	mg/L	Lab Analysis		0	
	Chloride	mg/L	Lab Analysis		0	
	Magnesium	mg/L	Lab Analysis		0	
	Potassium	mg/L	Lab Analysis		0	
	Sodium	mg/L	Lab Analysis		0	
	Sulfate	mg/L	Lab Analysis		0	
36 (P83)	Conductivity	µs/cm	In situ	Quarterly	0	<i>Not scheduled for sampling during sampling period</i>
	pH	pH	In situ		0	
	SWL	mbtoc	In situ		0	
	Bicarbonate	mg/L	Lab Analysis		0	



	Calcium	mg/L	Lab Analysis		0	
	Carbonate	mg/L	Lab Analysis		0	
	Chloride	mg/L	Lab Analysis		0	
	Magnesium	mg/L	Lab Analysis		0	
	Potassium	mg/L	Lab Analysis		0	
	Sodium	mg/L	Lab Analysis		0	
	Sulphate	mg/L	Lab Analysis		0	
37 (P84)	Conductivity	µs/cm	In situ	Quarterly	0	<i>Not scheduled for sampling during sampling period</i>
	pH	pH	In situ		0	
	SWL	mbtoc	In situ		0	
	Bicarbonate	mg/L	Lab Analysis		0	
	Calcium	mg/L	Lab Analysis		0	
	Carbonate	mg/L	Lab Analysis		0	
	Chloride	mg/L	Lab Analysis		0	
	Magnesium	mg/L	Lab Analysis		0	
	Potassium	mg/L	Lab Analysis		0	
	Sodium	mg/L	Lab Analysis		0	
	Sulphate	mg/L	Lab Analysis		0	
38	Conductivity	µs/cm	In situ		0	

(P85)	pH	pH	In situ	Quarterly	0	<i>Not scheduled for sampling during sampling period</i>
	SWL	mbtoc	In situ		0	
	Bicarbonate	mg/L	Lab Analysis		0	
	Calcium	mg/L	Lab Analysis		0	
	Carbonate	mg/L	Lab Analysis		0	
	Chloride	mg/L	Lab Analysis		0	
	Magnesium	mg/L	Lab Analysis		0	
	Potassium	mg/L	Lab Analysis		0	
	Sodium	mg/L	Lab Analysis		0	
	Sulfate	mg/L	Lab Analysis		0	
39 (P88)	Conductivity	µs/cm	In situ	Quarterly	0	<i>Not scheduled for sampling during sampling period</i>
	pH	pH	In situ		0	
	SWL	mbtoc	In situ		0	
	Bicarbonate	mg/L	Lab Analysis		0	
	Calcium	mg/L	Lab Analysis		0	
	Carbonate	mg/L	Lab Analysis		0	
	Chloride	mg/L	Lab Analysis		0	
	Magnesium	mg/L	Lab Analysis		0	
	Potassium	mg/L	Lab Analysis		0	

	Sodium	mg/L	Lab Analysis		0						
	Sulfate	mg/L	Lab Analysis		0						
40 (P89)	Conductivity	µs/cm	In situ	Quarterly	0	<i>Not scheduled for sampling during sampling period</i>					
	pH	pH	In situ		0						
	SWL	mbtoc	In situ		0						
	Bicarbonate	mg/L	Lab Analysis		0						
	Calcium	mg/L	Lab Analysis		0						
	Carbonate	mg/L	Lab Analysis		0						
	Chloride	mg/L	Lab Analysis		0						
	Magnesium	mg/L	Lab Analysis		0						
	Potassium	mg/L	Lab Analysis		0						
	Sodium	mg/L	Lab Analysis		0						
	Sulphate	mg/L	Lab Analysis		0						
	43 (SD9)	Conductivity	µs/cm		In situ						Upon discharge (within 12 hours)
TOC		mg/L	Lab Analysis		0	05/04/2024	12/04/2024	NA	NA	NA	4



Table 2 - Pollutant Limits Apply (Water)

EPL ID	Pollutant	Units of Measure	Sample Method	Monitoring Frequency	No. of Samples for the Month	Date Sampled	Date Obtained	Min Value	Mean Value	Max or Only Value	EPL Limit	Exceedance (Yes/No)	Comments (Mine Site Sample ID)
11	TSS	mg/L	Lab Analysis	Upon discharge	0	<i>No discharge occurred during sampling period</i>					50	NA	SD4
	Oil & Grease	mg/L	Lab Analysis		0						10	NA	
	pH	pH	In situ		0						6.5-8.5	NA	
13	TSS	mg/L	Lab Analysis	Upon discharge	0	<i>No discharge occurred during sampling period</i>					50	NA	SD2
	Oil & Grease	mg/L	Lab Analysis		0						10	NA	
	pH	pH	In situ		0						6.5-8.5	NA	
18	TSS	mg/L	Lab Analysis	Upon discharge	0	<i>No discharge occurred during sampling period</i>					50	NA	SD7
	Oil & Grease	mg/L	Lab Analysis		0						10	NA	
	pH	pH	In situ		0						6.5-8.5	NA	
24	TDS	mg/L	Lab Analysis	Upon discharge	0	<i>Namoi discharge point – Not constructed or currently utilised.</i>					350	NA	NR1
	pH	pH	In situ		0						6.5-8.5	NA	
27	TSS	mg/L	Lab Analysis	Upon discharge	0	<i>No discharge occurred during sampling period</i>					50	NA	SD8
	Oil & Grease	mg/L	Lab Analysis		0						10	NA	
	pH	pH	In situ		0						6.5-8.5	NA	
43	TSS	mg/L	Lab Analysis	Upon discharge	0	05/04/2024	12/04/2024	NA	NA	906	50	No ¹	SD9
	Oil & Grease	mg/L	Lab Analysis		0			NA	NA	<5	10	No	
	pH	pH	In situ		0			NA	NA	7.21	6.5-8.5	No	

¹ Total Suspended Solids (TSS) concentration limit did not apply as per EPL12789 Condition L2.5(a) as the controlled discharge occurred solely as a result of rainfall exceeding 38.4mm over a consecutive 5-day period (triggered 5/4/2024).



Table 3 – Quarterly Attended Noise Monitoring results summary table

Noise monitoring not scheduled in April. Next scheduled sampling is for June 2024.

EPL ID	Date	Measured Levels – dB(A)	Measured Levels – dB(A)	Measured Levels – dB(A)	Measured Levels – dB(A)	Limit(s)	Measurement Periods	Weather Compliant Conditions (D/E/N)			Compliant (Yes/No)	Date Obtained
		L _{eq} 15min Day	L _{eq} 15min Evening	L _{eq} 15min Night	L _{A1} (1 min) Night							
N5 ¹						<u>Day, Evening & Night:</u> 35 <u>Night</u> <u>L_{A1} (1 min):</u> 45	Day – 1.5 hrs					
							Evening – 0.5 hrs					
								Night – 1 hr				
N6						<u>Day, Evening & Night:</u> 35 <u>Night</u> <u>L_{A1} (1 min):</u> 45	Day – 1.5 hrs					
							Evening – 0.5 hrs					
								Night – 1 hr				
N8 ¹						<u>Day, Evening & Night:</u> 35 <u>Night</u> <u>L_{A1} (1 min):</u> 45	Day – 1.5 hrs					
							Evening – 0.5 hrs					
								Night – 1 hr				
N9 ¹						<u>Day, Evening & Night:</u> 35 <u>Night</u> <u>L_{A1} (1 min):</u> 45	Day – 1.5 hrs					
							Evening – 0.5 hrs					
								Night – 1 hr				

Figure 1 – EPL 12789 Monitoring Locations



- LEGEND**
- ML1609
 - Lot boundary
 - Watercourses
 - + Monitoring locations
 - + Surface water quality monitoring
 - + Licensed discharge point
 - ▲ Ambient air quality monitoring
 - Groundwater monitoring - standpipe single
 - Meteorological station
 - Noise monitoring

NARRABRI MINE

Figure 1
EPL 12789 Monitoring Locations
February 2024



NARRABRI MINE – MONTHLY MONITORING SUMMARY

Site Information

EPL No: 12789

EPA Website Link: <http://www.epa.nsw.gov.au/prpoeoapp/ViewPOEOLicence.aspx?DOCID=106922&SYSUID=1&LICID=12789>

Licensee: Narrabri Coal Operations Pty Ltd

Licensee Address: Narrabri Mine, 10 Kurrajong Creek Road, BAAN BAA NSW 2390

EPL Monitoring Points: See Figure 1 below

Sampling Period: May 2024

Obtained Date: 23/05/2024

Publication Date: 11/06/2024

Table 1 – No Pollutant Limits Apply

EPL ID	Pollutant	Units of Measure	Sample Method	Monitoring Frequency	No. of Samples for the Month	Dates Sampled	Date Obtained	Min Value	Mean Value	Median Value	Max or Only Value
ND3	Deposited Matter	g/m ² /month	Lab Analysis	Once a month (min. 4 weeks)	1	09/05/2024	23/05/2024	NA	NA	NA	0.4
11 (SD4)	Conductivity	µs/cm	In situ	Upon discharge (within 12 hours)	<i>No discharge occurred during sampling period (SD4)</i>						
	TOC	mg/L	Lab Analysis								
13 (SD2)	Conductivity	µs/cm	In situ	Upon discharge (within 12 hours)	<i>No discharge occurred during sampling period (SD2)</i>						
	TOC	mg/L	Lab Analysis								
14 (KC1US)	Conductivity	µs/cm	In situ	In the event of flow during the quarter & after each wet weather discharge from points 11, 13, 18,27	<i>No flow events and/or mine discharge occurred during sampling period (KC1US)</i>						
	TOC	mg/L	Lab Analysis								
	Oil & Grease	mg/L	Lab Analysis								
	pH	pH	In situ								
15 (KC1DS)	TSS	mg/L	Lab Analysis	In the event of flow during the quarter & after each wet weather discharge from points 11, 13, 18,27	<i>No flow events and/or mine discharge occurred during sampling period (KC1DS)</i>						
	Conductivity	µs/cm	In situ								
	TOC	mg/L	Lab Analysis								
	Oil & Grease	mg/L	Lab Analysis								
	pH	pH	In situ								

16 (KC2US)	Conductivity	µs/cm	In situ	In the event of flow during the quarter & after each wet weather discharge from points 11, 13, 18,27	<i>No flow events and/or mine discharge occurred during sampling period (KC2US)</i>
	TOC	mg/L	Lab Analysis		
	Oil & Grease	mg/L	Lab Analysis		
	pH	pH	In situ		
	TSS	mg/L	Lab Analysis		
17 (KC2DS)	Conductivity	µs/cm	In situ	In the event of flow during the quarter & after each wet weather discharge from points 11, 13, 18,27	<i>No flow events and/or mine discharge occurred during sampling period (KC2DS)</i>
	TOC	mg/L	Lab Analysis		
	Oil & Grease	mg/L	Lab Analysis		
	pH	pH	In situ		
	TSS	mg/L	Lab Analysis		
18 (SD7)	Conductivity	µs/cm	In Situ	Upon discharge (within 12 hours)	<i>No discharge occurred during sampling period (SD7)</i>
	TOC	mg/L	Lab Analysis		
19 (KCUS)	Conductivity	µs/cm	In situ	In the event of flow during the quarter & after each wet weather discharge from points 11, 13, 18,27	<i>No flow events and/or mine discharge occurred during sampling period (KCUS)</i>
	TOC	mg/L	Lab Analysis		
	Oil & Grease	mg/L	Lab Analysis		
	pH	pH	In situ		
	TSS	mg/L	Lab Analysis		
20 (KCDS)	Conductivity	µs/cm	In situ	In the event of flow during the quarter & after each wet weather discharge	<i>No flow events and/or mine discharge occurred during sampling period (KCDS)</i>
	TOC	mg/L	Lab Analysis		
	Oil & Grease	mg/L	Lab Analysis		
	pH	pH	In situ		

	TSS	mg/L	Lab Analysis	from points 11, 13, 18,27		
21 (PCa)	Conductivity	µs/cm	In situ	In the event of flow during the quarter & after each wet weather discharge from points 11, 13, 18,27		<i>No flow events and/or mine discharge occurred during sampling period (PCa)</i>
	TOC	mg/L	Lab Analysis			
	Oil & Grease	mg/L	Lab Analysis			
	pH	pH	In situ			
	TSS	mg/L	Lab Analysis			
22 (PC1)	Conductivity	µs/cm	In situ	In the event of flow during the quarter & after each wet weather discharge from points 11, 13, 18,27		<i>No flow events and/or mine discharge occurred during sampling period (PC1)</i>
	TOC	mg/L	Lab Analysis			
	Oil & Grease	mg/L	Lab Analysis			
	pH	pH	In situ			
	TSS	mg/L	Lab Analysis			
24 (NR1)	pH	pH	In situ	Upon Discharge (within 4 hrs)		<i>Namoi discharge point – Not constructed or currently utilised (NR1)</i>
	TDS	mg/L	Lab Analysis			
25 (NRUS)	pH	pH	In situ	Upon Discharge (within 4 hrs)		<i>Namoi discharge point – Not constructed or currently utilised (NRUS)</i>
	TDS	mg/L	Lab Analysis			
26 (NRDS)	pH	pH	In situ	Upon Discharge (within 4 hrs)		<i>Namoi discharge point – Not constructed or currently utilised (NRDS)</i>
	TDS	mg/L	Lab Analysis			
28 (P28)	Conductivity	µs/cm	In situ	Quarterly	0	<i>Not scheduled for sampling during sampling period</i>
	pH	pH	In situ		0	
	SWL	mbtoc	In situ		0	
	Bicarbonate	mg/L	Lab Analysis		0	

	Calcium	mg/L	Lab Analysis		0	
	Carbonate	mg/L	Lab Analysis		0	
	Chloride	mg/L	Lab Analysis		0	
	Magnesium	mg/L	Lab Analysis		0	
	Potassium	mg/L	Lab Analysis		0	
	Sodium	mg/L	Lab Analysis		0	
	Sulphate	mg/L	Lab Analysis		0	
29 (P29)	Conductivity	µs/cm	Lab Analysis	Quarterly	0	<i>Not scheduled for sampling during sampling period</i>
	pH	pH	Lab Analysis		0	
	SWL	mbtoc	Lab Analysis		0	
	Bicarbonate	mg/L	Lab Analysis		0	
	Calcium	mg/L	Lab Analysis		0	
	Carbonate	mg/L	Lab Analysis		0	
	Chloride	mg/L	Lab Analysis		0	
	Magnesium	mg/L	Lab Analysis		0	
	Potassium	mg/L	Lab Analysis		0	
	Sodium	mg/L	Lab Analysis		0	

	Sulphate	mg/L	Lab Analysis		0	
30 (P30)	Conductivity	µs/cm	Lab Analysis	Quarterly	0	<i>Not scheduled for sampling during sampling period</i>
	pH	pH	Lab Analysis		0	
	SWL	mbtoc	Lab Analysis		0	
	Bicarbonate	mg/L	Lab Analysis		0	
	Calcium	mg/L	Lab Analysis		0	
	Carbonate	mg/L	Lab Analysis		0	
	Chloride	mg/L	Lab Analysis		0	
	Magnesium	mg/L	Lab Analysis		0	
	Potassium	mg/L	Lab Analysis		0	
	Sodium	mg/L	Lab Analysis		0	
	Sulphate	mg/L	Lab Analysis		0	
31 (P31)	Conductivity	µs/cm	Lab Analysis	Quarterly	0	<i>Not scheduled for sampling during sampling period</i>
	pH	pH	Lab Analysis		0	
	SWL	mbtoc	Lab Analysis		0	
	Bicarbonate	mg/L	Lab Analysis		0	
	Calcium	mg/L	Lab Analysis		0	

	Carbonate	mg/L	Lab Analysis		0	
	Chloride	mg/L	Lab Analysis		0	
	Magnesium	mg/L	Lab Analysis		0	
	Potassium	mg/L	Lab Analysis		0	
	Sodium	mg/L	Lab Analysis		0	
	Sulphate	mg/L	Lab Analysis		0	
32 (P32)	Conductivity	µs/cm	Lab Analysis	Quarterly	0	<i>Not scheduled for sampling during sampling period</i>
	pH	pH	Lab Analysis		0	
	SWL	mbtoc	Lab Analysis		0	
	Bicarbonate	mg/L	Lab Analysis		0	
	Calcium	mg/L	Lab Analysis		0	
	Carbonate	mg/L	Lab Analysis		0	
	Chloride	mg/L	Lab Analysis		0	
	Magnesium	mg/L	Lab Analysis		0	
	Potassium	mg/L	Lab Analysis		0	
	Sodium	mg/L	Lab Analysis		0	
	Sulphate	mg/L	Lab Analysis		0	

33 (P33)	Conductivity	µs/cm	Lab Analysis	Quarterly	0	<i>Not scheduled for sampling during sampling period</i>
	pH	pH	Lab Analysis		0	
	SWL	mbtoc	Lab Analysis		0	
	Bicarbonate	mg/L	Lab Analysis		0	
	Calcium	mg/L	Lab Analysis		0	
	Carbonate	mg/L	Lab Analysis		0	
	Chloride	mg/L	Lab Analysis		0	
	Magnesium	mg/L	Lab Analysis		0	
	Potassium	mg/L	Lab Analysis		0	
	Sodium	mg/L	Lab Analysis		0	
	Sulphate	mg/L	Lab Analysis		0	
34 (P34)	Conductivity	µs/cm	In situ	Quarterly	0	<i>Not scheduled for sampling during sampling period</i>
	pH	pH	In situ		0	
	SWL	mbtoc	In situ		0	
	Bicarbonate	mg/L	Lab Analysis		0	
	Calcium	mg/L	Lab Analysis		0	
	Carbonate	mg/L	Lab Analysis		0	
	Chloride	mg/L	Lab Analysis		0	
	Magnesium	mg/L	Lab Analysis		0	

	Potassium	mg/L	Lab Analysis		0	
	Sodium	mg/L	Lab Analysis		0	
	Sulphate	mg/L	Lab Analysis		0	
35 (P58)	Conductivity	µs/cm	Lab Analysis	Quarterly	0	<i>Not scheduled for sampling during sampling period</i>
	pH	pH	Lab Analysis		0	
	SWL	mbtoc	Lab Analysis		0	
	Bicarbonate	mg/L	Lab Analysis		0	
	Calcium	mg/L	Lab Analysis		0	
	Carbonate	mg/L	Lab Analysis		0	
	Chloride	mg/L	Lab Analysis		0	
	Magnesium	mg/L	Lab Analysis		0	
	Potassium	mg/L	Lab Analysis		0	
	Sodium	mg/L	Lab Analysis		0	
	Sulfate	mg/L	Lab Analysis		0	
36 (P83)	Conductivity	µs/cm	In situ	Quarterly	0	<i>Not scheduled for sampling during sampling period</i>
	pH	pH	In situ		0	
	SWL	mbtoc	In situ		0	
	Bicarbonate	mg/L	Lab Analysis		0	
	Calcium	mg/L	Lab Analysis		0	

	Carbonate	mg/L	Lab Analysis		0	
	Chloride	mg/L	Lab Analysis		0	
	Magnesium	mg/L	Lab Analysis		0	
	Potassium	mg/L	Lab Analysis		0	
	Sodium	mg/L	Lab Analysis		0	
	Sulphate	mg/L	Lab Analysis		0	
37 (P84)	Conductivity	µs/cm	In situ	Quarterly	0	<i>Not scheduled for sampling during sampling period</i>
	pH	pH	In situ		0	
	SWL	mbtoc	In situ		0	
	Bicarbonate	mg/L	Lab Analysis		0	
	Calcium	mg/L	Lab Analysis		0	
	Carbonate	mg/L	Lab Analysis		0	
	Chloride	mg/L	Lab Analysis		0	
	Magnesium	mg/L	Lab Analysis		0	
	Potassium	mg/L	Lab Analysis		0	
	Sodium	mg/L	Lab Analysis		0	
	Sulphate	mg/L	Lab Analysis		0	
38 (P85)	Conductivity	µs/cm	In situ		0	
	pH	pH	In situ		0	
	SWL	mbtoc	In situ		0	

	Bicarbonate	mg/L	Lab Analysis	Quarterly	0	<i>Not scheduled for sampling during sampling period</i>
	Calcium	mg/L	Lab Analysis		0	
	Carbonate	mg/L	Lab Analysis		0	
	Chloride	mg/L	Lab Analysis		0	
	Magnesium	mg/L	Lab Analysis		0	
	Potassium	mg/L	Lab Analysis		0	
	Sodium	mg/L	Lab Analysis		0	
	Sulfate	mg/L	Lab Analysis		0	
39 (P88)	Conductivity	µs/cm	In situ	Quarterly	0	<i>Not scheduled for sampling during sampling period</i>
	pH	pH	In situ		0	
	SWL	mbtoc	In situ		0	
	Bicarbonate	mg/L	Lab Analysis		0	
	Calcium	mg/L	Lab Analysis		0	
	Carbonate	mg/L	Lab Analysis		0	
	Chloride	mg/L	Lab Analysis		0	
	Magnesium	mg/L	Lab Analysis		0	
	Potassium	mg/L	Lab Analysis		0	
	Sodium	mg/L	Lab Analysis		0	
	Sulfate	mg/L	Lab Analysis		0	

40 (P89)	Conductivity	µs/cm	In situ	Quarterly	0	<i>Not scheduled for sampling during sampling period</i>
	pH	pH	In situ		0	
	SWL	mbtoc	In situ		0	
	Bicarbonate	mg/L	Lab Analysis		0	
	Calcium	mg/L	Lab Analysis		0	
	Carbonate	mg/L	Lab Analysis		0	
	Chloride	mg/L	Lab Analysis		0	
	Magnesium	mg/L	Lab Analysis		0	
	Potassium	mg/L	Lab Analysis		0	
	Sodium	mg/L	Lab Analysis		0	
	Sulphate	mg/L	Lab Analysis		0	
43 (SD9)	Conductivity	µs/cm	In situ		0	<i>No discharge occurred during sampling period (SD9)</i>
	pH	pH	In situ		0	
	SWL	mbtoc	In situ		0	
	Bicarbonate	mg/L	Lab Analysis		0	
	Calcium	mg/L	Lab Analysis		0	
	Carbonate	mg/L	Lab Analysis		0	
	Chloride	mg/L	Lab Analysis		0	
	Potassium	mg/L	Lab Analysis		0	



	Sodium	mg/L	Lab Analysis			
	Sulphate	mg/L	Lab Analysis			



Table 2 - Pollutant Limits Apply (Water)

EPL ID	Pollutant	Units of Measure	Sample Method	Monitoring Frequency	No. of Samples for the Month	Date Sampled	Date Obtained	Min Value	Mean Value	Max or Only Value	EPL Limit	Exceedance (Yes/No)	Comments (Mine Site Sample ID)
11	TSS	mg/L	Lab Analysis	Upon discharge	0	<i>No discharge occurred during sampling period</i>					50	NA	SD4
	Oil & Grease	mg/L	Lab Analysis		0						10	NA	
	pH	pH	In situ		0						6.5-8.5	NA	
13	TSS	mg/L	Lab Analysis	Upon discharge	0	<i>No discharge occurred during sampling period</i>					50	NA	SD2
	Oil & Grease	mg/L	Lab Analysis		0						10	NA	
	pH	pH	In situ		0						6.5-8.5	NA	
18	TSS	mg/L	Lab Analysis	Upon discharge	0	<i>No discharge occurred during sampling period</i>					50	NA	SD7
	Oil & Grease	mg/L	Lab Analysis		0						10	NA	
	pH	pH	In situ		0						6.5-8.5	NA	
24	TDS	mg/L	Lab Analysis	Upon discharge	0	<i>Namoi discharge point – Not constructed or currently utilised.</i>					350	NA	NR1
	pH	pH	In situ		0						6.5-8.5	NA	
27	TSS	mg/L	Lab Analysis	Upon discharge	0	<i>No discharge occurred during sampling period</i>					50	NA	SD8
	Oil & Grease	mg/L	Lab Analysis		0						10	NA	
	pH	pH	In situ		0						6.5-8.5	NA	
43	TSS	mg/L	Lab Analysis	Upon discharge	0	<i>No discharge occurred during sampling period</i>					50	NA	SD9



	Oil & Grease	mg/L	Lab Analysis		0		10	NA	
	pH	pH	In situ		0		6.5-8.5	NA	

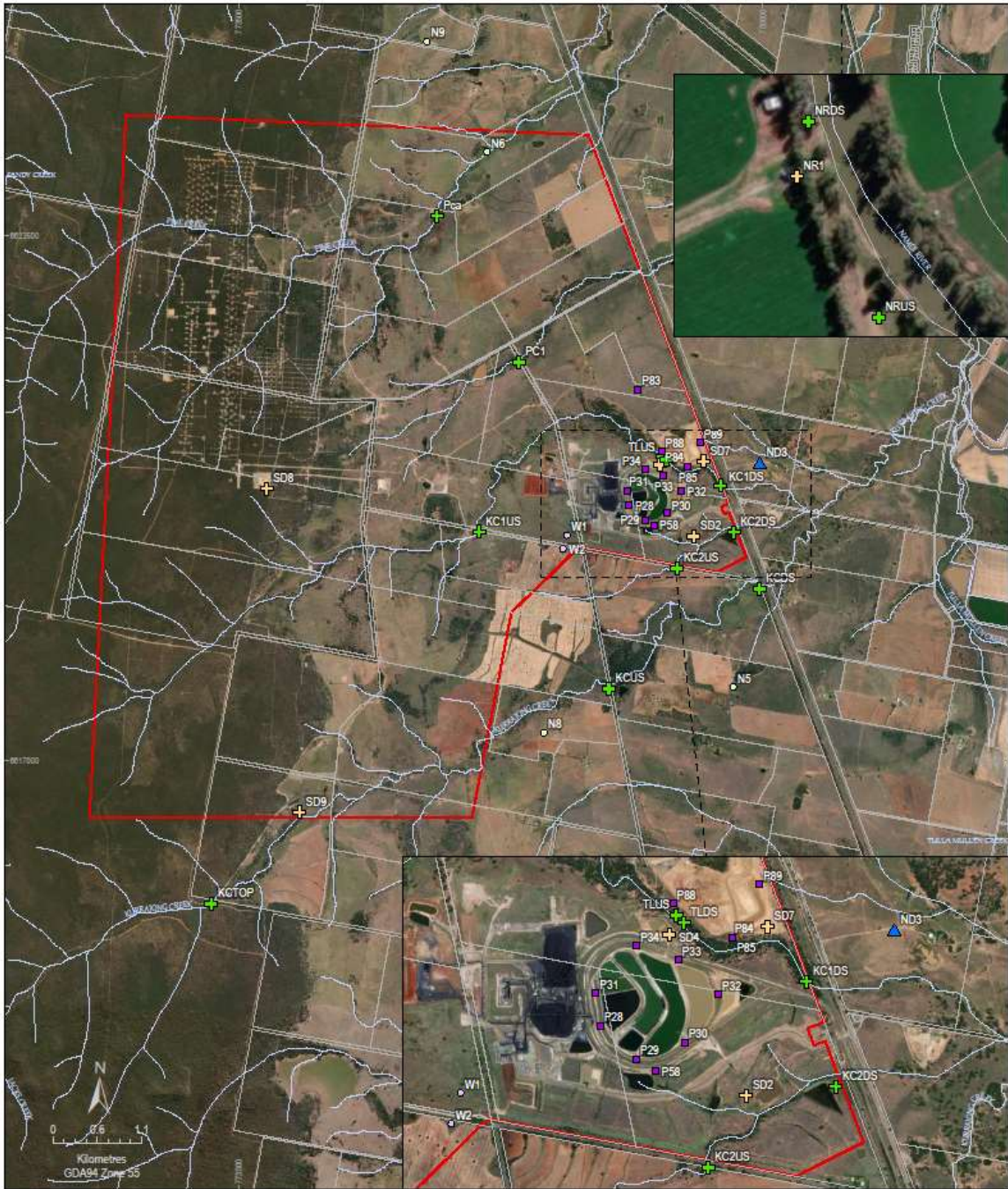


Table 3 – Quarterly Attended Noise Monitoring results summary table

Noise monitoring not scheduled in May. Next scheduled sampling is for June 2024.

EPL ID	Date	Measured Levels – dB(A)	Measured Levels – dB(A)	Measured Levels – dB(A)	Measured Levels – dB(A)	Limit(s)	Measurement Periods	Weather Compliant Conditions (D/E/N)			Compliant (Yes/No)	Date Obtained
		Leq 15min Day	Leq 15min Evening	Leq 15min Night	LA1 (1 min) Night							
N5 ¹						<u>Day, Evening & Night:</u> 35 <u>Night</u> <u>LA1 (1 min):</u> 45	Day – 1.5 hrs					
							Evening – 0.5 hrs					
								Night – 1 hr				
N6						<u>Day, Evening & Night:</u> 35 <u>Night</u> <u>LA1 (1 min):</u> 45	Day – 1.5 hrs					
							Evening – 0.5 hrs					
								Night – 1 hr				
N8 ¹						<u>Day, Evening & Night:</u> 35 <u>Night</u> <u>LA1 (1 min):</u> 45	Day – 1.5 hrs					
							Evening – 0.5 hrs					
								Night – 1 hr				
N9 ¹						<u>Day, Evening & Night:</u> 35 <u>Night</u> <u>LA1 (1 min):</u> 45	Day – 1.5 hrs					
							Evening – 0.5 hrs					
								Night – 1 hr				

Figure 1 – EPL 12789 Monitoring Locations



WHITEHAVEN COAL

LEGEND

ML1609	Monitoring locations
Lot boundary	Surface water quality monitoring
Watercourses	Licensed discharge point
	Ambient air quality monitoring
	Groundwater monitoring - standpipe single
	Meteorological station
	Noise monitoring

ONWARD
CONSULTING

NARRABRI MINE

Figure 1
EPL 12789 Monitoring Locations
February 2024



NARRABRI MINE – MONTHLY MONITORING SUMMARY

Site Information

EPL No: 12789

EPA Website Link: <http://www.epa.nsw.gov.au/prpoeoapp/ViewPOEOLicence.aspx?DOCID=106922&SYSUID=1&LICID=12789>

Licensee: Narrabri Coal Operations Pty Ltd

Licensee Address: Narrabri Mine, 10 Kurrajong Creek Road, BAAN BAA NSW 2390

EPL Monitoring Points: See Figure 1 below

Sampling Period: June 2024

Obtained Date: 17/07/2024

Publication Date: 18/07/2024

Table 1 – No Pollutant Limits Apply

EPL ID	Pollutant	Units of Measure	Sample Method	Monitoring Frequency	No. of Samples for the Month	Dates Sampled	Date Obtained	Min Value	Mean Value	Median Value	Max or Only Value
ND3	Deposited Matter	g/m ² /month	Lab Analysis	Once a month (min. 4 weeks)	1	13/06/2024	27/06/2024	NA	NA	NA	0.1
11 (SD4)	Conductivity	µs/cm	In situ	Upon discharge (within 12 hours)	<i>No discharge occurred during sampling period (SD4)</i>						
	TOC	mg/L	Lab Analysis								
13 (SD2)	Conductivity	µs/cm	In situ	Upon discharge (within 12 hours)	<i>No discharge occurred during sampling period (SD2)</i>						
	TOC	mg/L	Lab Analysis								
	TOC	mg/L	Lab Analysis								
14 (KC1US)	Conductivity	µs/cm	In situ	In the event of flow during the quarter & after each wet weather discharge from points 11, 13, 18,27, 43	1	02/06/2024	12/06/2024	NA	NA	NA	103
	TOC	mg/L	Lab Analysis		1	02/06/2024	12/06/2024	NA	NA	NA	13
	Oil & Grease	mg/L	Lab Analysis		1	02/06/2024	12/06/2024	NA	NA	NA	<5
	pH	pH	In situ		1	02/06/2024	12/06/2024	NA	NA	NA	6.68
	TSS	mg/L	Lab Analysis		1	02/06/2024	12/06/2024	NA	NA	NA	169
15 (KC1DS)	Conductivity	µs/cm	In situ	In the event of flow during the quarter & after each wet weather discharge from points 11, 13, 18,27, 43	0	Ambient flow 02/06/2024 following significant rain event. No flow.		NA	NA	NA	NA
	TOC	mg/L	Lab Analysis		0			NA	NA	NA	NA
	Oil & Grease	mg/L	Lab Analysis		0			NA	NA	NA	NA
	pH	pH	In situ		0			NA	NA	NA	NA
	TSS	mg/L	Lab Analysis		0			NA	NA	NA	NA



16 (KC2US)	Conductivity	µs/cm	In situ	In the event of flow during the quarter & after each wet weather discharge from points 11, 13, 18,27, 43	0	02/06/2024	12/06/2024	NA	NA	NA	64
	TOC	mg/L	Lab Analysis		0	02/06/2024	12/06/2024	NA	NA	NA	14
	Oil & Grease	mg/L	Lab Analysis		0	02/06/2024	12/06/2024	NA	NA	NA	<5
	pH	pH	In situ		0	02/06/2024	12/06/2024	NA	NA	NA	6.77
	TSS	mg/L	Lab Analysis		0	02/06/2024	12/06/2024	NA	NA	NA	18
17 (KC2DS)	Conductivity	µs/cm	In situ	In the event of flow during the quarter & after each wet weather discharge from points 11, 13, 18,27,43	0	02/06/2024	12/06/2024	NA	NA	NA	124
	TOC	mg/L	Lab Analysis		0	02/06/2024	12/06/2024	NA	NA	NA	14
	Oil & Grease	mg/L	Lab Analysis		0	02/06/2024	12/06/2024	NA	NA	NA	<5
	pH	pH	In situ		0	02/06/2024	12/06/2024	NA	NA	NA	7.01
	TSS	mg/L	Lab Analysis		0	02/06/2024	12/06/2024	NA	NA	NA	53
18 (SD7)	Conductivity	µs/cm	In Situ	Upon discharge (within 12 hours)	<i>No discharge occurred during sampling period (SD7)</i>						
	TOC	mg/L	Lab Analysis								
19 (KCUS)	Conductivity	µs/cm	In situ	In the event of flow during the quarter & after each wet weather discharge from points 11, 13, 18,27,43	0	01/06/2024	12/06/2024	NA	NA	NA	64
	TOC	mg/L	Lab Analysis		0	01/06/2024	12/06/2024	NA	NA	NA	13
	Oil & Grease	mg/L	Lab Analysis		0	01/06/2024	12/06/2024	NA	NA	NA	<5
	pH	pH	In situ		0	01/06/2024	12/06/2024	NA	NA	NA	7.37
	TSS	mg/L	Lab Analysis		0	01/06/2024	12/06/2024	NA	NA	NA	1090
20 (KCDS)	Conductivity	µs/cm	In situ	In the event of flow during the quarter & after each wet weather	0	01/06/2024	12/06/2024	NA	NA	NA	92
	TOC	mg/L	Lab Analysis		0	01/06/2024	12/06/2024	NA	NA	NA	10
	Oil & Grease	mg/L	Lab Analysis		0	01/06/2024	12/06/2024	NA	NA	NA	<5

	pH	pH	In situ	discharge from points 11, 13, 18,27,43	0	01/06/2024	12/06/2024	NA	NA	NA	7.35
	TSS	mg/L	Lab Analysis		0	01/06/2024	12/06/2024	NA	NA	NA	482
21 (PCa)	Conductivity	µs/cm	In situ	In the event of flow during the quarter & after each wet weather discharge from points 11, 13, 18,27,43	0	Ambient flow 02/06/2024 following significant rain event. No flow.		NA	NA	NA	NA
	TOC	mg/L	Lab Analysis		0			NA	NA	NA	NA
	Oil & Grease	mg/L	Lab Analysis		0			NA	NA	NA	NA
	pH	pH	In situ		0			NA	NA	NA	NA
	TSS	mg/L	Lab Analysis		0			NA	NA	NA	NA
22 (PC1)	Conductivity	µs/cm	In situ	In the event of flow during the quarter & after each wet weather discharge from points 11, 13, 18,27,43	0	02/06/2024	12/06/2024	NA	NA	NA	136
	TOC	mg/L	Lab Analysis		0	02/06/2024	12/06/2024	NA	NA	NA	15
	Oil & Grease	mg/L	Lab Analysis		0	02/06/2024	12/06/2024	NA	NA	NA	<5
	pH	pH	In situ		0	02/06/2024	12/06/2024	NA	NA	NA	6.94
	TSS	mg/L	Lab Analysis		0	02/06/2024	12/06/2024	NA	NA	NA	96
24 (NR1)	pH	pH	In situ	Upon Discharge (within 4 hrs)	<i>Namoi discharge point – Not constructed or currently utilised (NR1)</i>						
	TDS	mg/L	Lab Analysis								
25 (NRUS)	pH	pH	In situ	Upon Discharge (within 4 hrs)	<i>Namoi discharge point – Not constructed or currently utilised (NRUS)</i>						
	TDS	mg/L	Lab Analysis								
26 (NRDS)	pH	pH	In situ	Upon Discharge (within 4 hrs)	<i>Namoi discharge point – Not constructed or currently utilised (NRDS)</i>						
	TDS	mg/L	Lab Analysis								
28 (P28)	Conductivity	µs/cm	In situ	Quarterly	<i>Bore was dry during sampling period</i>						
	pH	pH	In situ								
	SWL	mbtoc	In situ								

	Bicarbonate	mg/L	Lab Analysis								
	Calcium	mg/L	Lab Analysis								
	Carbonate	mg/L	Lab Analysis								
	Chloride	mg/L	Lab Analysis								
	Magnesium	mg/L	Lab Analysis								
	Potassium	mg/L	Lab Analysis								
	Sodium	mg/L	Lab Analysis								
	Sulphate	mg/L	Lab Analysis								
29 (P29)	Conductivity	µs/cm	In situ	Quarterly	1	25/06/2024	17/07/2024	NA	NA	NA	18290
	pH	pH	In situ		1	25/06/2024	17/07/2024	NA	NA	NA	6.57
	SWL	mbtoc	In situ		1	25/06/2024	17/07/2024	NA	NA	NA	4.46
	Bicarbonate	mg/L	Lab Analysis		1	25/06/2024	17/07/2024	NA	NA	NA	609
	Calcium	mg/L	Lab Analysis		1	25/06/2024	17/07/2024	NA	NA	NA	168
	Carbonate	mg/L	Lab Analysis		1	25/06/2024	17/07/2024	NA	NA	NA	<1
	Chloride	mg/L	Lab Analysis		1	25/06/2024	17/07/2024	NA	NA	NA	6490
	Magnesium	mg/L	Lab Analysis		1	25/06/2024	17/07/2024	NA	NA	NA	363
	Potassium	mg/L	Lab Analysis		1	25/06/2024	17/07/2024	NA	NA	NA	9
	Sodium	mg/L	Lab Analysis		1	25/06/2024	17/07/2024	NA	NA	NA	3770

	Sulphate	mg/L	Lab Analysis		1	20/03/2024	05/04/2024	NA	NA	NA	720
30 (P30)	Conductivity	µs/cm	In situ	Quarterly	1	28/06/2024	17/07/2024	NA	NA	NA	17080
	pH	pH	In situ		1	28/06/2024	17/07/2024	NA	NA	NA	6.42
	SWL	mbtoc	In situ		1	28/06/2024	17/07/2024	NA	NA	NA	11.90
	Bicarbonate	mg/L	Lab Analysis		1	28/06/2024	17/07/2024	NA	NA	NA	841
	Calcium	mg/L	Lab Analysis		1	28/06/2024	17/07/2024	NA	NA	NA	164
	Carbonate	mg/L	Lab Analysis		1	28/06/2024	17/07/2024	NA	NA	NA	<1
	Chloride	mg/L	Lab Analysis		1	28/06/2024	17/07/2024	NA	NA	NA	5530
	Magnesium	mg/L	Lab Analysis		1	28/06/2024	17/07/2024	NA	NA	NA	397
	Potassium	mg/L	Lab Analysis		1	28/06/2024	17/07/2024	NA	NA	NA	18
	Sodium	mg/L	Lab Analysis		1	28/06/2024	17/07/2024	NA	NA	NA	3470
	Sulphate	mg/L	Lab Analysis		1	28/06/2024	17/07/2024	NA	NA	NA	1120
31 (P31)	Conductivity	µs/cm	In situ	Quarterly	1	28/06/2024	17/07/2024	NA	NA	NA	6940
	pH	pH	In situ		1	28/06/2024	17/07/2024	NA	NA	NA	6.75
	SWL	mbtoc	In situ		1	28/06/2024	17/07/2024	NA	NA	NA	16.42
	Bicarbonate	mg/L	Lab Analysis		1	28/06/2024	17/07/2024	NA	NA	NA	832
	Calcium	mg/L	Lab Analysis		1	28/06/2024	17/07/2024	NA	NA	NA	108
	Carbonate	mg/L	Lab Analysis		1	28/06/2024	17/07/2024	NA	NA	NA	<1
	Chloride	mg/L	Lab Analysis		1	28/06/2024	17/07/2024	NA	NA	NA	2000

	Magnesium	mg/L	Lab Analysis		1	28/06/2024	17/07/2024	NA	NA	NA	189
	Potassium	mg/L	Lab Analysis		1	28/06/2024	17/07/2024	NA	NA	NA	14
	Sodium	mg/L	Lab Analysis		1	28/06/2024	17/07/2024	NA	NA	NA	1330
	Sulphate	mg/L	Lab Analysis		1	28/06/2024	17/07/2024	NA	NA	NA	287329
32 (P32)	Conductivity	µs/cm	In situ	Quarterly	1	28/06/2024	17/07/2024	NA	NA	NA	2214
	pH	pH	In situ		1	28/06/2024	17/07/2024	NA	NA	NA	7.89
	SWL	mbtoc	In situ		1	28/06/2024	17/07/2024	NA	NA	NA	8.20
	Bicarbonate	mg/L	Lab Analysis		1	28/06/2024	17/07/2024	NA	NA	NA	866
	Calcium	mg/L	Lab Analysis		1	28/06/2024	17/07/2024	NA	NA	NA	2
	Carbonate	mg/L	Lab Analysis		1	28/06/2024	17/07/2024	NA	NA	NA	34
	Chloride	mg/L	Lab Analysis		1	28/06/2024	17/07/2024	NA	NA	NA	178
	Magnesium	mg/L	Lab Analysis		1	28/06/2024	17/07/2024	NA	NA	NA	6
	Potassium	mg/L	Lab Analysis		1	28/06/2024	17/07/2024	NA	NA	NA	<1
	Sodium	mg/L	Lab Analysis		1	28/06/2024	17/07/2024	NA	NA	NA	558
	Sulphate	mg/L	Lab Analysis		1	28/06/2024	17/07/2024	NA	NA	NA	117
33	Conductivity	µs/cm	In situ	Quarterly	0	28/06/2024	17/07/2024	NA	NA	NA	5860
	pH	pH	In situ		0	28/06/2024	17/07/2024	NA	NA	NA	6.93
	SWL	mbtoc	In situ		0	28/06/2024	17/07/2024	NA	NA	NA	15.40
	Bicarbonate	mg/L	Lab Analysis		0	28/06/2024	17/07/2024	NA	NA	NA	NA
	Calcium	mg/L	Lab Analysis		0	28/06/2024	17/07/2024	NA	NA	NA	NA

(P33)	Carbonate	mg/L	Lab Analysis		0	28/06/2024	17/07/2024	NA	NA	NA	NA
	Chloride	mg/L	Lab Analysis		0	28/06/2024	17/07/2024	NA	NA	NA	NA
	Magnesium	mg/L	Lab Analysis		0	28/06/2024	17/07/2024	NA	NA	NA	NA
	Potassium	mg/L	Lab Analysis		0	28/06/2024	17/07/2024	NA	NA	NA	NA
	Sodium	mg/L	Lab Analysis		0	28/06/2024	17/07/2024	NA	NA	NA	NA
	Sulphate	mg/L	Lab Analysis		0	28/06/2024	17/07/2024	NA	NA	NA	NA
34 (P34)	Conductivity	µs/cm	In situ	Quarterly	0	<i>Bore was dry during sampling period</i>					
	pH	pH	In situ		0						
	SWL	mbtoc	In situ		0						
	Bicarbonate	mg/L	Lab Analysis		0						
	Calcium	mg/L	Lab Analysis		0						
	Carbonate	mg/L	Lab Analysis		0						
	Chloride	mg/L	Lab Analysis		0						
	Magnesium	mg/L	Lab Analysis		0						
	Potassium	mg/L	Lab Analysis		0						
	Sodium	mg/L	Lab Analysis		0						
Sulphate	mg/L	Lab Analysis	0								
35 (P58)	Conductivity	µs/cm	In situ	Quarterly	1	28/06/2024	17/07/2024	NA	NA	NA	11760
	pH	pH	In situ		1	28/06/2024	17/07/2024	NA	NA	NA	6.27
	SWL	mbtoc	In situ		1	28/06/2024	17/07/2024	NA	NA	NA	20.26

	Bicarbonate	mg/L	Lab Analysis		1	28/06/2024	17/07/2024	NA	NA	NA	4790
	Calcium	mg/L	Lab Analysis		1	28/06/2024	17/07/2024	NA	NA	NA	40
	Carbonate	mg/L	Lab Analysis		1	28/06/2024	17/07/2024	NA	NA	NA	<1
	Chloride	mg/L	Lab Analysis		1	28/06/2024	17/07/2024	NA	NA	NA	1670
	Magnesium	mg/L	Lab Analysis		1	28/06/2024	17/07/2024	NA	NA	NA	77
	Potassium	mg/L	Lab Analysis		1	28/06/2024	17/07/2024	NA	NA	NA	79
	Sodium	mg/L	Lab Analysis		1	28/06/2024	17/07/2024	NA	NA	NA	3120
	Sulfate	mg/L	Lab Analysis		1	28/06/2024	17/07/2024	NA	NA	NA	128
36 (P83)	Conductivity	µs/cm	In situ	Quarterly	0	<i>Bore was dry during sampling period</i>					
	pH	pH	In situ		0						
	SWL	mbtoc	In situ		0						
	Bicarbonate	mg/L	Lab Analysis		0						
	Calcium	mg/L	Lab Analysis		0						
	Carbonate	mg/L	Lab Analysis		0						
	Chloride	mg/L	Lab Analysis		0						
	Magnesium	mg/L	Lab Analysis		0						
	Potassium	mg/L	Lab Analysis		0						
	Sodium	mg/L	Lab Analysis		0						
	Sulphate	mg/L	Lab Analysis		0						

37 (P84)	Conductivity	µs/cm	In situ	Quarterly	1	25/06/2024	17/07/2024	NA	NA	NA	20860
	pH	pH	In situ		1	25/06/2024	17/07/2024	NA	NA	NA	6.39
	SWL	mbtoc	In situ		1	25/06/2024	17/07/2024	NA	NA	NA	10.66
	Bicarbonate	mg/L	Lab Analysis		1	25/06/2024	17/07/2024	NA	NA	NA	2550
	Calcium	mg/L	Lab Analysis		1	25/06/2024	17/07/2024	NA	NA	NA	94
	Carbonate	mg/L	Lab Analysis		1	25/06/2024	17/07/2024	NA	NA	NA	<1
	Chloride	mg/L	Lab Analysis		1	25/06/2024	17/07/2024	NA	NA	NA	6640
	Magnesium	mg/L	Lab Analysis		1	25/06/2024	17/07/2024	NA	NA	NA	396
	Potassium	mg/L	Lab Analysis		1	25/06/2024	17/07/2024	NA	NA	NA	36
	Sodium	mg/L	Lab Analysis		1	25/06/2024	17/07/2024	NA	NA	NA	4460
	Sulphate	mg/L	Lab Analysis		1	25/06/2024	17/07/2024	NA	NA	NA	1140
	38 (P85)	Conductivity	µs/cm		In situ	Quarterly	0	<i>Bore was dry during sampling period</i>			
pH		pH	In situ	0							
SWL		mbtoc	In situ	0							
Bicarbonate		mg/L	Lab Analysis	0							
Calcium		mg/L	Lab Analysis	0							
Carbonate		mg/L	Lab Analysis	0							
Chloride		mg/L	Lab Analysis	0							
Magnesium		mg/L	Lab Analysis	0							
Potassium		mg/L	Lab Analysis	0							

	Sodium	mg/L	Lab Analysis		0	
	Sulfate	mg/L	Lab Analysis		0	
39 (P88)	Conductivity	µs/cm	In situ	Quarterly	0	<i>Bore was dry during sampling period</i>
	pH	pH	In situ		0	
	SWL	mbtoc	In situ		0	
	Bicarbonate	mg/L	Lab Analysis		0	
	Calcium	mg/L	Lab Analysis		0	
	Carbonate	mg/L	Lab Analysis		0	
	Chloride	mg/L	Lab Analysis		0	
	Magnesium	mg/L	Lab Analysis		0	
	Potassium	mg/L	Lab Analysis		0	
	Sodium	mg/L	Lab Analysis		0	
	Sulfate	mg/L	Lab Analysis		0	
	40 (P89)	Conductivity	µs/cm		In situ	
pH		pH	In situ	0		
SWL		mbtoc	In situ	0		
Bicarbonate		mg/L	Lab Analysis	0		
Calcium		mg/L	Lab Analysis	0		
Carbonate		mg/L	Lab Analysis	0		
Chloride		mg/L	Lab Analysis	0		



	Magnesium	mg/L	Lab Analysis		0						
	Potassium	mg/L	Lab Analysis		0						
	Sodium	mg/L	Lab Analysis		0						
	Sulphate	mg/L	Lab Analysis		0						
43 (SD9)	Conductivity	µs/cm	In situ	Upon discharge (within 12 hours)	0	1/06/2024	12/06/2024	NA	NA	NA	47
	TOC	mg/L	Lab Analysis		0	1/06/2024	12/06/2024	NA	NA	NA	7

EPL ID	Pollutant	Units of Measure	Sample Method	Monitoring Frequency	No. of Samples for the Month	Date Sampled	Date Obtained	Min Value	Mean Value	Max or Only Value	EPL Limit	Exceedance (Yes/No)	Comments (Mine Site Sample ID)
11	TSS	mg/L	Lab Analysis	Upon discharge	0	<i>No discharge occurred during sampling period</i>					50	NA	SD4
	Oil & Grease	mg/L	Lab Analysis		0						10	NA	
	pH	pH	In situ		0						6.5-8.5	NA	
13	TSS	mg/L	Lab Analysis	Upon discharge	0	<i>No discharge occurred during sampling period</i>					50	NA	SD2
	Oil & Grease	mg/L	Lab Analysis		0						10	NA	
	pH	pH	In situ		0						6.5-8.5	NA	
18	TSS	mg/L	Lab Analysis	Upon discharge	0	<i>No discharge occurred during sampling period</i>					50	NA	SD7
	Oil & Grease	mg/L	Lab Analysis		0						10	NA	
	pH	pH	In situ		0						6.5-8.5	NA	
24	TDS	mg/L	Lab Analysis	Upon discharge	0	<i>Namoi discharge point – Not constructed or currently utilised.</i>					350	NA	NR1
	pH	pH	In situ		0						6.5-8.5	NA	
27	TSS	mg/L	Lab Analysis	Upon discharge	0	<i>No discharge occurred during sampling period</i>					50	NA	SD8
	Oil & Grease	mg/L	Lab Analysis		0						10	NA	
	pH	pH	In situ		0						6.5-8.5	NA	
43	TSS	mg/L	Lab Analysis	Upon discharge	0	01/06/2024	12/06/2024	NA	NA	688	50	No ^a	SD9
	Oil & Grease	mg/L	Lab Analysis		0			NA	NA	<5	10	No	
	pH	pH	In situ		0			NA	NA	7.38	6.5-8.5	No	

^a Total Suspended Solids (TSS) concentration limit did not apply as per EPL12789 Condition L2.5(a) as the controlled discharge occurred solely as a result of rainfall exceeding 38.4mm over a consecutive 5-day period (triggered 5/4/2024).

Table 2 - Pollutant Limits Apply (Water)
Table 3 – Quarterly Attended Noise Monitoring results summary table

EPL ID	Date	Measured Levels – dB(A) Leq 15min Day	Measured Levels – dB(A) Leq 15min Evening	Measured Levels – dB(A) Leq 15min Night	Measured Levels – dB(A) LA1 (1 min) Night	Limit(s)	Measurement Periods	Weather Compliant Conditions (D/E/N)			Compliant (Yes/No)	Date Obtained
								Y	N	N		
N5 ¹	03/06/2024 ²	30	28	32	40	<u>Day, Evening & Night:</u> 35 <u>Night</u> <u>LA1 (1 min):</u> 45	Day – 1.5 hrs	Y	N	N	Y	2/07/2024
	04/06/2024 ²	37	28	27	30		Evening – 0.5 hrs	Y	Y	Y	Y ¹	
	05/06/2024 ²	29	26	N/M	N/M		Night – 1 hr	N	Y	Y	Y	
N6	03/06/2024 ²	I/A	30	31	37	<u>Day, Evening & Night:</u> 35 <u>Night</u> <u>LA1 (1 min):</u> 45	Day – 1.5 hrs	Y	Y	N	Y	
	04/06/2024 ²	I/A	26	29	33		Evening – 0.5 hrs	Y	Y	Y	Y	
	05/06/2024 ²	31	32	35	42		Night – 1 hr	Y	Y	Y	Y	
N8 ¹	03/06/2024 ²	23	28	30	35	<u>Day, Evening & Night:</u> 35 <u>Night</u> <u>LA1 (1 min):</u> 45	Day – 1.5 hrs	Y	N	N	Y	
	04/06/2024 ²	34	26	32	39		Evening – 0.5 hrs	Y	Y	Y	Y	
	05/06/2024 ²	32	27	I/A	I/A		Night – 1 hr	N	Y	Y	Y	
N9 ¹	03/06/2024 ²	I/A	30	28	31	<u>Day, Evening & Night:</u> 35 <u>Night</u> <u>LA1 (1 min):</u> 45	Day – 1.5 hrs	Y	Y	N	Y	
	04/06/2024 ²	I/A	25	30	41		Evening – 0.5 hrs	Y	Y	Y	Y	
	05/06/2024 ²	31	I/A	32	38		Night – 1 hr	Y	Y	Y	Y	

I/A = Inaudible, N/M = Not Measurable

Note 1: Property is owned by Narrabri Coal Operations. Noise limits contained in Conditions 1-3, Schedule 4 of PA 08_0144 Mod 2 and the identical limits contained in condition L3 of Environment Protection Licence No 12789 are not applicable.

Note 2: Evening and Night monitoring conducted on this date, Day monitoring conducted during the following day period.

Figure 1 – EPL 12789 Monitoring Locations



- LEGEND**
- ML1609
 - Lot boundary
 - Watercourses
 - Monitoring locations**
 - + Surface water quality monitoring
 - + Licensed discharge point
 - ▲ Ambient air quality monitoring
 - Groundwater monitoring - standpipe single
 - Meteorological station
 - Noise monitoring